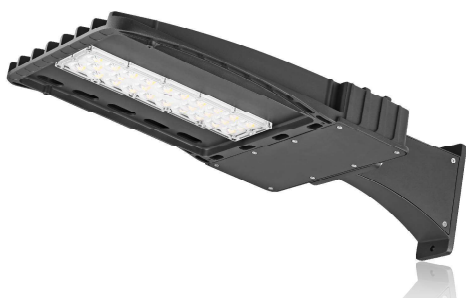


## LED AREA LIGHT - WSD Series 60W

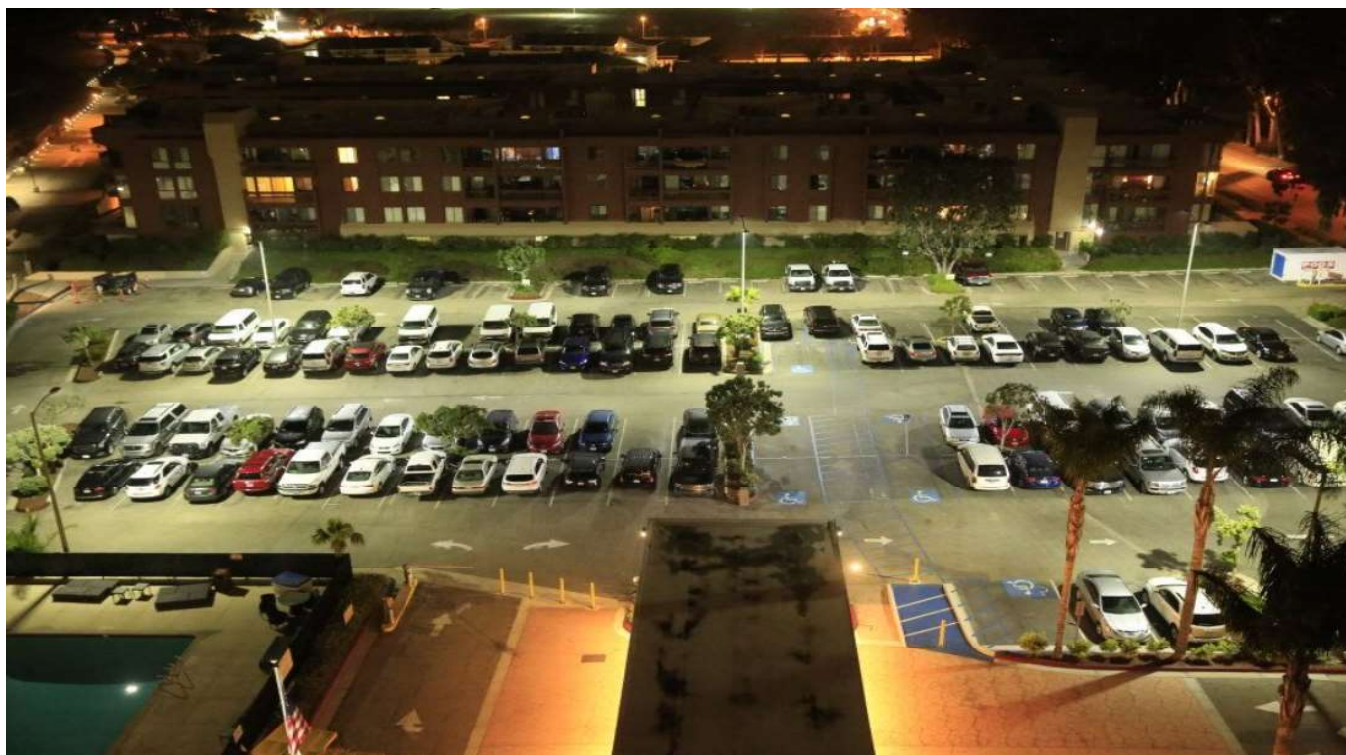


### Features

- Lumileds LED, high luminous efficiency and long working life.
- High efficiency LED Driver, the wide range input voltage AC120-277V/200-480V.
- Die Cast aluminium cooling design, high quality and better cooling for LED  $T_j < 85^\circ\text{C}$ . Excellent Optics design, greatly improve the light utilization and evenness.
- Motion sensor Control Available (Option)

### Product Applications

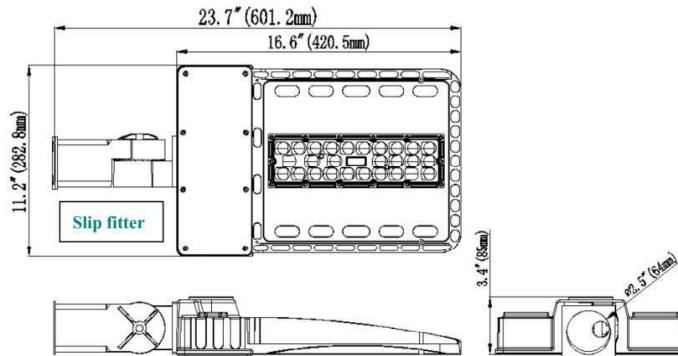
LED SHOEBOX LIGHT series can be widely used in outdoor lighting(Wet location),Excellent for Museums, Art Galleries, Underground parking lot, Buildings,The lawn, Industrial areas, Residential areas, Sidewalks, Parking lot, Schools, Gardens and etc,and many more applications.



## LED AREA LIGHT - WSD Series 60W

### Specifications

Unit : inch(mm)



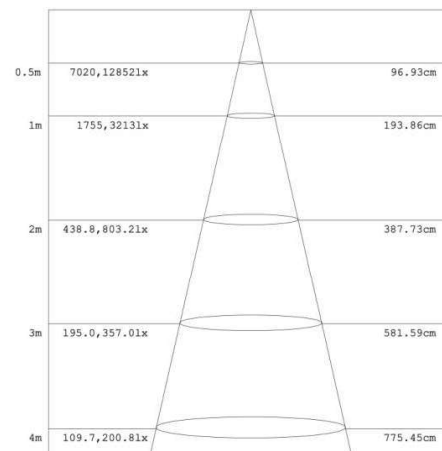
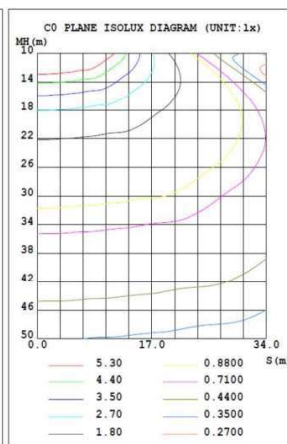
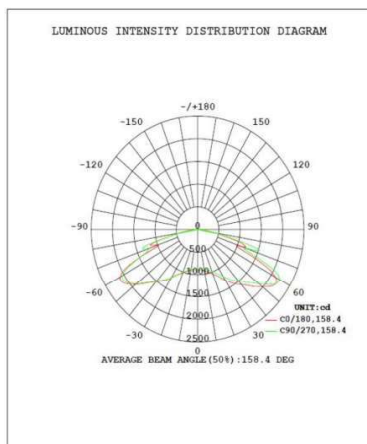
### Structure Features

- Shell materials: Aluminum & PC.
- Finish: Dark Bronze/White
- Net weight : 4.5Kg (9.9 lbs)
- Product Size:601.2mm\*282.8mm\*85mm
- Carton Size:660mm\*350mm\*185mm

### Technical Parameters

WSD-SB06W27-XXK			
Power	60W	Lighting Angle	Type II, III, IV, V
Input Voltage	AC120-277/200-480V	LED Brightness Decay	<5%/6000 hrs
PF	>0.95	Working Life	>50000 hrs
Driver Efficiency	>90%	Working Temperature	-30 - +45°C
Luminous Flux	8248Lm	Storage Temperature	-40 - +80°C
Color Temperature	3000K/4000K/5000K/5700K	Protection Level	Wet Location/IP65
CRI	Ra>70	Cable	3 core , 18AWG
Optional dimming function	1-10Vdc		

### Photometry



### Example:WSD-SB06W27-XXK-D-T2-S-P-M

WSD	SB	06W	27	50K	D	T2	S	P	M
	Product	Power	Voltage	Color Temp	Finish	Light Angle	Mounting Mean	PhotoCell	Motion sensor
	SB		27	30K(3000K)	D	T2		P12	M
	SHOEBOX	06W(60W)	AC120-277V	40K(4000K)	Dark Bronze	T3	S	P27	Motion sensor
			48	50K(5000K)	W	T4	A	P	
			AC200-480V	57K(5700K)±500K	White	T5	T		