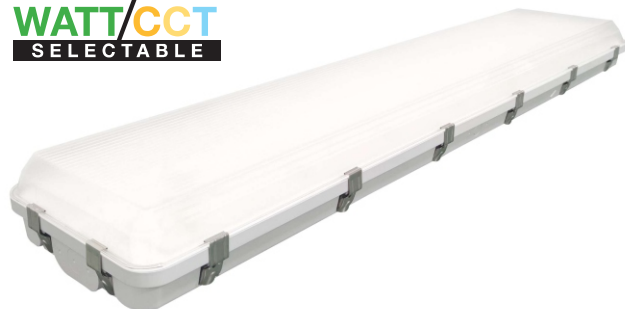


Wattages: 155W / 185W / 200W

WATT/CCT
SELECTABLE



Selectable LED Vapor Tight High Bay Light provides gasketed enclosure which provides dust-free and moisture-free fixture. LED Vapor Tight High Bay Light Series can be widely used for food processing plants, meat lockers, beverage coolers, car washes, and parking structures.



FEATURES

- Made of high quality ABS material, high ignition point, more safe.
- With PC lens.
- Lampshade-inner surface stripe design make the light diffusion angle greater and the light more uniform.
- 0-10V dimming.
- 12Vdc auxiliary
- Motion sensor control available (optional)

WATT/CCT
FIELD-ADJUSTABLE

Simply select desired CCT and Wattage before installation



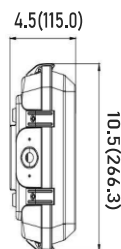
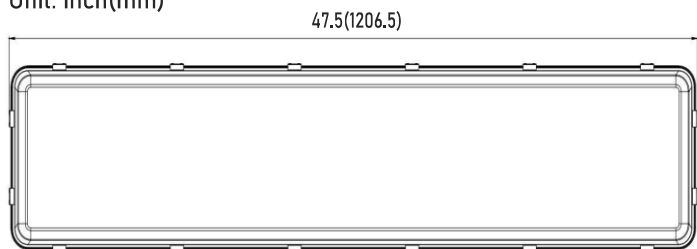
SPECIFICATION	
TYPE	WSD-VHB155185200W27-3545K
WATTAGE	155W/185W/200W
LUMEN	24800 lm / 29600 lm / 32000 lm
EFFICACY	≥ 160 lm/W
CCT	3500K/4000K/5000K
CRI	80
INPUT VOLTAGE	AC120-277V
LIGHT ANGLE	115°
POWER FACTOR	0.90
DRIVER EFFICACY	88%
FACTORY SETTINGS	200W & 4000K
WORKING TEMPERATURE	-40°F ~ 104°F
LIFESPAN (L70)	100000 hours
PROTECTION LEVEL	Wet locations
CABLE	None
WARRANTY	5 year limited

LED SELECTABLE VAPOR TIGHT HIGH BAY LIGHT - WSD Series

Wattages: 155W / 185W / 200W

DIMENSION

Unit: inch(mm)



WATTAGE	155W/185W/200W
NET WEIGHT	7.5KG(16.5lbs)
BOX DIM.	48.39"x10.91"x4.57"(1pcs/CTN)

EMERGENCY BACK-UP (SOLD SEPARATELY)

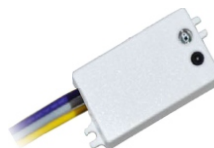


WSD-EMS8W27-XX
8W Emergency Backup Battery
LED Driver

WSD-EMS15W27-XX
15W Emergency Backup Battery
LED Driver

WSD-EMS20W27-XX
20W Emergency Backup Battery
LED Driver

CONTROL (SOLD SEPARATELY)



ANT-9
Microwave Motion Sensor



RC-100
Microwave Sensor
Remote Controller

INSTALLING ACCESSORIES (STANDARD)



V-HOOK / BRACKET / SCREW /
PLASTIC TUBE / WATERPROOF PLUG

INSTALLING ACCESSORIES (SOLD SEPARATELY)



THE CHAIN
LENGTH:(41.34 inch)

ORDERING INFORMATION

EXAMPLE:

WSD-VHB155185200W27-3545K-E[Blank,M]

WSD	VHB	155185200W	27	3545K	E
PRODUCT	PRODUCT	WATTAGE	VOLTAGE	CCT	CONTROL
WSD (WSD LED INC)	VHB (Vapor Tight High Bay Light)	155/185/200W - (155W/185W/200W)	27 - (120-277V)	3545K - (3500K/4000K/5000K)	M - (Motion Sensor)

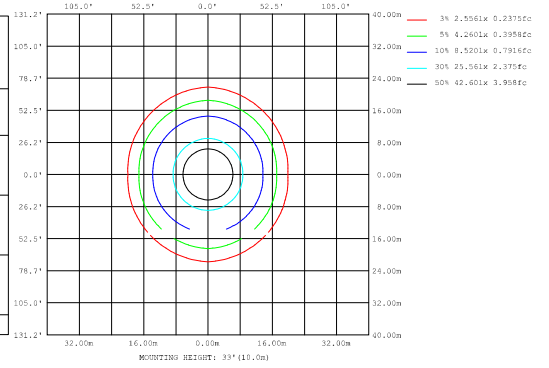
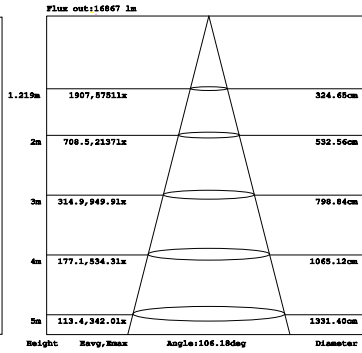
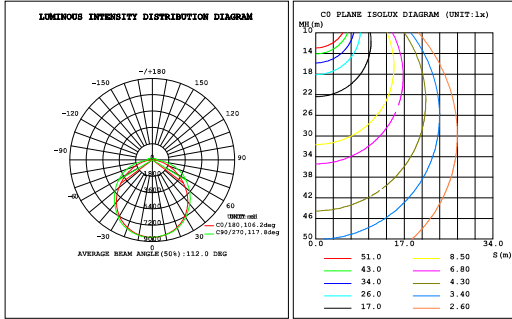
LED SELECTABLE VAPOR TIGHT HIGH BAY LIGHT - WSD Series

Wattages: 155W / 185W / 200W

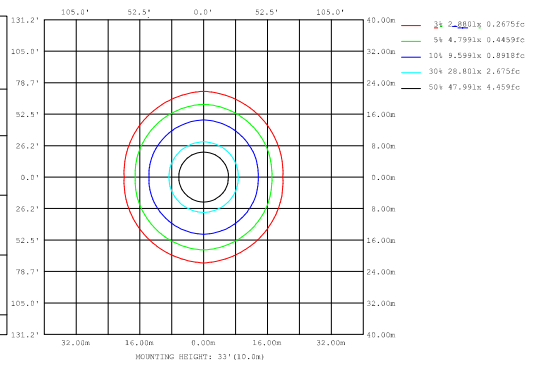
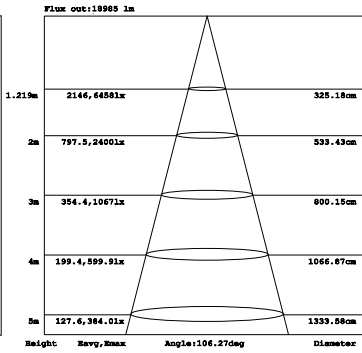
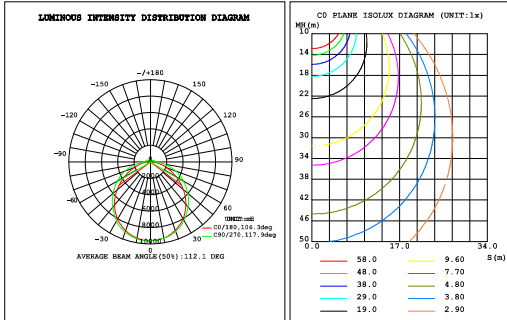
PHOTOMETRICS

For complete IES files, please visit our website.

WSD-VHB155185200W27-3545K (155W&4000K)



WSD-VHB155185200W27-3545K (185W&4000K)



WSD-VHB155185200W27-3545K (200W&4000K)

