



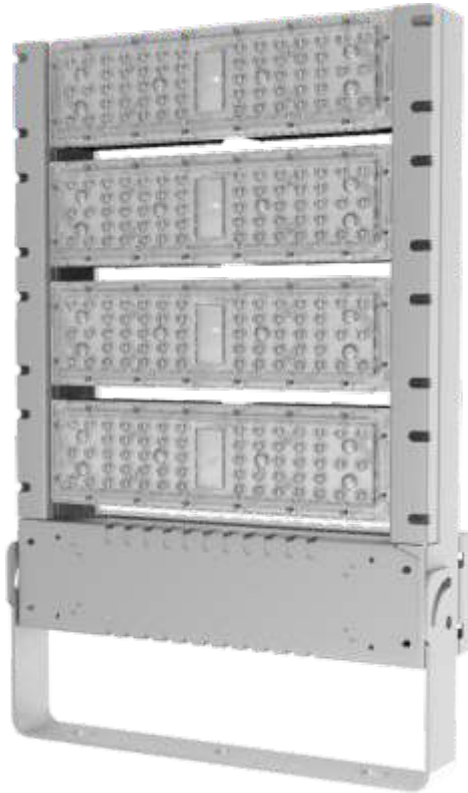
**BRIGHTWAY**  LED Lighting

# SolarBright™

SOLAR POWERED LED LIGHT TOWERS

# LED STADIUM LIGHTS

## 300W LED Flood Lights



### Rotating Bracket

The LED lights come with a versatile rotating mounting bracket that offers exceptional flexibility during installation. These lights can be easily tilted and rotated to different orientations, allowing for customized lighting configurations that ensure desired lighting uniformity and coverage.

### Top Quality LED Light Source

The SMD LED package delivers exceptional energy efficiency with up to 150 lumens per watt. Also, it maintains stable color temperature and offers high color rendering index (CRI) of 80 or higher.

### Mean Well Power Supply

Mean Well is the industry standard producer of LED drivers, known for their exceptional longevity and ability to provide a stable operating environment for LED lights.

### Finned Heat Sink

The finned heat sink design improves the heat dissipation of the LED flood lights by providing a larger surface area to dissipate heat away from the lights. The fins on the heat sink increase the surface area in contact with surrounding air, allowing for greater heat transfer. The gap between the fins also allows for better airflow, which facilitates heat dissipation. This design allows the lights to operate at a lower temperature, which in turn improves the lifespan and stability of the lights and allows the LEDs to run at high power without risk of overheating.

### Anti-Glare LED Lens

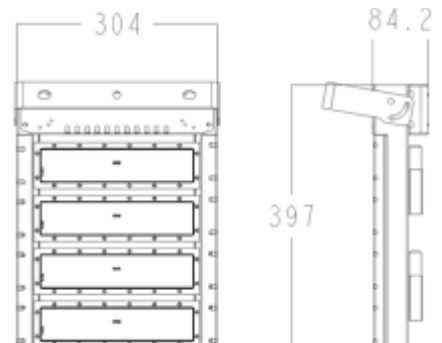
The LED flood lights for commercial and industrial use are equipped with an anti-glare lens that effectively reduces glare by a minimum of 75%. This reduction in glare is highly beneficial as it improves safety, comfort and overall satisfaction for workers and occupants within these settings.

**300W**



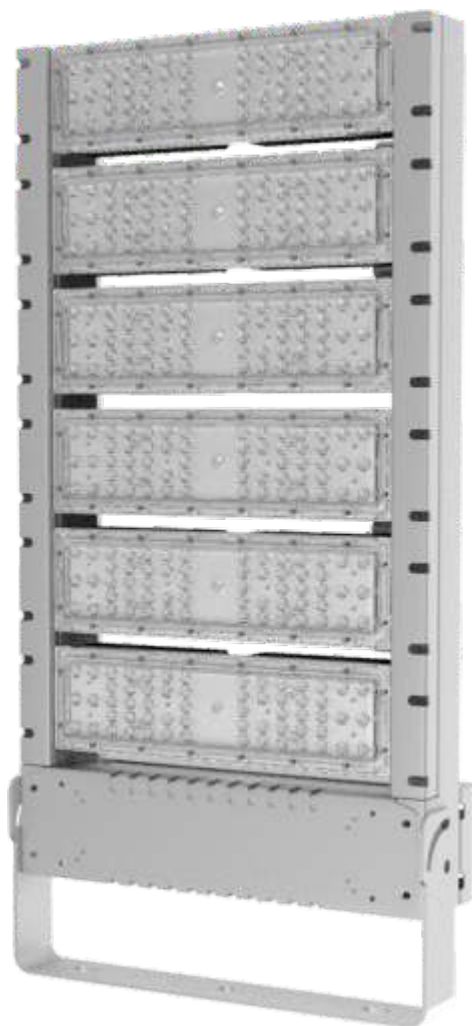
Model: LS-ARE-300-LW

- Lumens: 45,000lm
- Total weight: 7kg
- LED: 3030 SMD LED (2022 low thermal tech)
- CCT: 2700K to 7500K (regular), 1500 K to 10000K (customized)
- CRI: 75 (regular), 80 / 90 / 95 / 98 (customized)
- Beam angle: 11° / 24° / 36° / 60° / 90°
- Input voltage: 90-295VAC, 50-60Hz (MEAN WELL HLG OR MOSO)  
110VAC / 220V / 240VAC (MEAN WELL ELG OR MOSO)
- Driver: MEAN WELL HLG or ELG, MOSO (IP67)
- Power factor: >95%
- Life span: 100,000 hours
- Warranty: 5 years



# LED STADIUM LIGHTS

## 500W LED Flood Lights



### Rotating Bracket

The LED lights come with a versatile rotating mounting bracket that offers exceptional flexibility during installation. These lights can be easily tilted and rotated to different orientations, allowing for customized lighting configurations that ensure desired lighting uniformity and coverage.

### Top Quality LED Light Source

The SMD LED package delivers exceptional energy efficiency with up to 150 lumens per watt. Also, it maintains stable color temperature and offers high color rendering index (CRI) of 80 or higher.

### Mean Well Power Supply

Mean Well is the industry standard producer of LED drivers, known for their exceptional longevity and ability to provide a stable operating environment for LED lights.

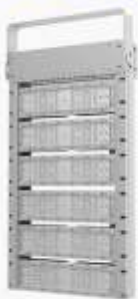
### Finned Heat Sink

The finned heat sink design improves the heat dissipation of the LED flood lights by providing a larger surface area to dissipate heat away from the lights. The fins on the heat sink increase the surface area in contact with surrounding air, allowing for greater heat transfer. The gap between the fins also allows for better airflow, which facilitates heat dissipation. This design allows the lights to operate at a lower temperature, which in turn improves the lifespan and stability of the lights and allows the LEDs to run at high power without risk of overheating.

### Anti-Glare LED Lens

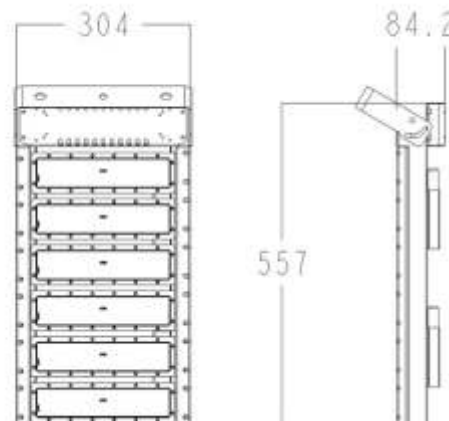
The LED flood lights for commercial and industrial use are equipped with an anti-glare lens that effectively reduces glare by a minimum of 75%. This reduction in glare is highly beneficial as it improves safety, comfort and overall satisfaction for workers and occupants within these settings.

## 500W



### Model: LS-ARE-500-LW

Lumens:	75,000lm
Total weight:	7kg
LED:	3030 SMD LED (2022 low thermal tech)
CCT:	2700K to 7500K (regular), 1500 K to 10000K (customized)
CRI:	75 (regular), 80 / 90 / 95 / 98 (customized)
Beam angle:	11° / 24° / 36° / 60° / 90°
Input voltage:	90-295VAC, 50-60Hz (MEAN WELL HLG OR MOSO) 110VAC / 220V / 240VAC (MEAN WELL ELG OR MOSO)
Driver:	MEAN WELL HLG or ELG, MOSO (IP67)
Power factor:	>95%
Life span:	100,000 hours
Warranty:	5 years



# SOLAR PANELS

## Great Performance and Reliability

- The multi-busbar half-cut technology
- Certified in TUV for salt spray & ammonia corrosion
- 2400Pa wind load and 5400Pa snow load testing
- Effectively reducing BOS costs to achieve lower LCOE
- First-year degradation is less than 2%
- Low hot-spot & micro crack risk

## Performance Warranty

### 12 YEARS

Enhanced product warranty on materials and workmanship

### 25 YEARS

Linear power performance warranty

## Management System Characteristics

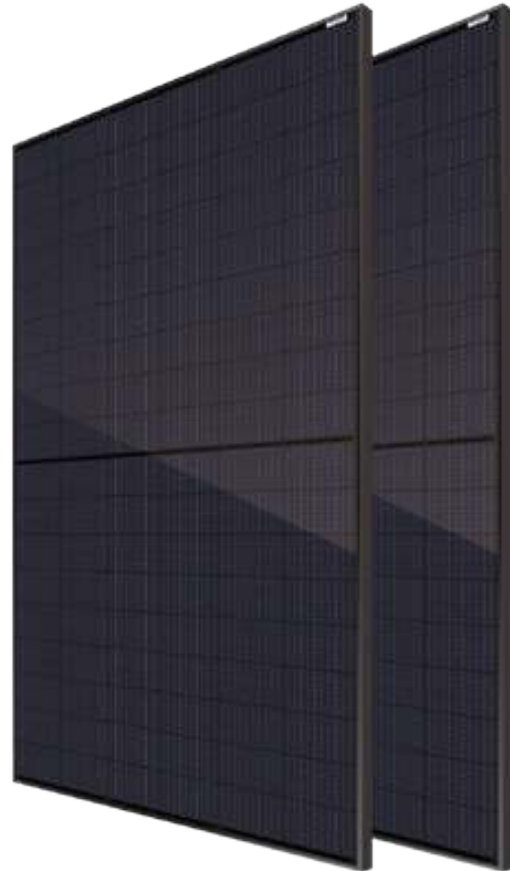
- ISO 9001: 2015 Quality Management System
- ISO 14001: 2015 Environment Management System
- ISO 450001: 2018 Occupational Health and Safety Management Systems

## Product Certificates

- IEC 61215 / IEC 61730 / UL 61730



## Black Mono-Facial Perc 420W Efficiency up to 21.48%



Dimensions: 1724\*1134\*35mm  
Weight: 22.0kg  
Max. System Voltage: 1000V/1500V (IED/UL)

### Electrical Data (STC)

Maximum Power (Pmax/W)	420
Operating Voltage (Vmp/V)	37.56
Short Circuit Current (Isc/A)	13.98
Voltage at Maximum Power (Vmp/V)	31.60
Current at Maximum Power (Imp/A)	13.30
Module Efficiency ηm(%)	21.48

### Electrical Data (NMOT)

Maximum Power (Pmax/W)	316
Operating Voltage (Vmp/V)	34.57
Short Circuit Current (Isc/A)	11.43
Voltage at Maximum Power (Vmp/V)	28.79
Current at Maximum Power (Imp/A)	10.98

### Mechanical Data

Cell Type	182×91mm Mono
Cell Orientation	108 (6×18)
Module Dimensions	1724×1134×35mm
Weight	22.0kg
Glass	3.2mm high transmittance, reinforced glass
Backsheet	Anti-aging film(Black)
Frame Material	Anodized aluminum alloy (Black)
Junction Box	Protection class IP68
Cable	4.0 mm <sup>2</sup> positive pole: 200 mm negative pole: 250 mm wire length
Connector	MC4 compatible connector

STC (Standard Testing Conditions): Irradiance 1000W/m<sup>2</sup>, Cell Temperature 25°C, AM1.5 Operating Temperature: -40°C~+85°C

NMOT (Nominal Module Operating Temperature): Irradiance 800W/m<sup>2</sup>, Ambient Temperature 20°C, AM1.5, Wind Speed 1m/s.

# INVERTER

## Single Phase Hybrid Inverter



**HIR5~10KLNA Series**

### Elegant

- Elegant appearance & light weight
- Low noise
- Touch LCD screen

### Safe and Reliable

- Supports full power charge and discharge, automatic battery management
- Supports 100% unbalanced load capacity
- Max. efficiency reaches up to 98.2%
- Battery reverse connect protection
- Anti-power control function
- IP65 waterproof

### Flexible

- Supports up to 8 units in parallel connection
- Supports multi-machine parallel battery sharing
- Compatible with lead-acid and lithium-ion batteries



# BATTERY

## Tier 1 Long Lifespan LifeP04 Battery

### 25.6V 100H & 200AH Battery

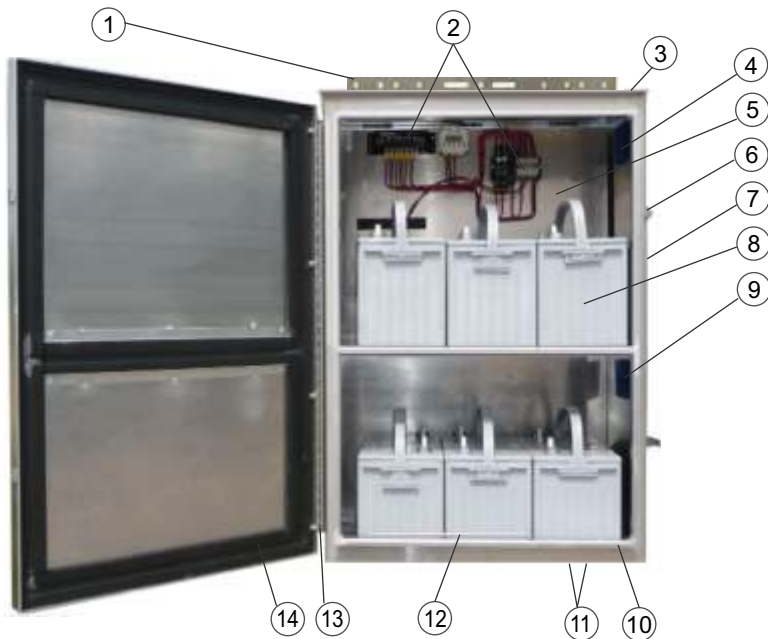
- Smart BMS to protect battery
- Supports multiple connections
- Plug & play
- IP65
- LCD display screen, bluetooth and GPS tracking available



# INVERTER SPECIFICATIONS

Model Number	HIR5KLNA	HIR6KLNA	HIR8KLNA	HIR10KLNA
Input (PV)				
Max. power(kW)	7.5	9	12	13
Max. DC voltage(V)	550			
MPPT voltage range(V)	120-500			
Max.input current of single MPPT(A)	12			
MPPT tracker/strings	4/1			
AC Output				
Rated output power(kVA)	5	6	8	10
Max. output current(A)	24	28.8	38.3	47.8
Grid voltage/range(V)	120/240(split phase),208(2/3 phase),230(single phase)			
Frequency (Hz)	50 /60			
PF	0.8 lagging-0.8 leading			
THDi	<3%			
AC output topology	split phase,2/3 phase,single phase			
Battery				
Battery voltage range(V)	40-58			
Max. charging voltage(V)	58			
Max. charge/discharge current(A)	120/120	135/135	190/190	210/210
Battery type	Lithium / Lead-acid			
Communication interface	CAN/RS485			
EPS Output				
Rated power (kVA)	5	6	8	10
Rated output voltage(V)	120/240(split phase),208(2/3 phase),230(single phase)			
Rated output current(A)	24	28.8	38.3	47.8
Rated frequency (Hz)	50 /60			
Automatic switching time (ms)	<20			
THDu	<2%			
Overload capacity	125%, 60S/150%, 1S			
General Data				
Max. efficiency	98.20%			
North America efficiency	97.20%			
IP Ratio	IP65/NEMA 3R			
Noise emission (dB)	<25	<29	<29	<29
Operation temperature	- 25°C 60°C			
Cooling	Natural			
Relative humidity	0 ~95% non-condensing			
Altitude	2,000m(>2,000 Derating)			
Isolation transformer	No			
Self-consumption(W)	<3			
Dimensions W*D*H (mm)	430*220*710			
Weight (kg)	41			
Display and communication				
Display	LCD			
Interface:RS485/Wifi/4G/CAN/DRM	Yes/ Optional/Optional/ Yes/ Yes			

# BATTERY ENCLOSURE



- ① Mounting Tab
- ② Electrical Assembly (Not included)
- ③ Rain Drip Lip
- ④ Fiberglass "Insect Proof" Screen on all Louvered Openings
- ⑤ Back Panel
- ⑥ Stainless Lockable Draw Latch
- ⑦ BBA-6 Cabinet
- ⑧ Battery (Not included)
- ⑨ Filter Media (Removable for cleaning)
- ⑩ Double Flanged Door Opening
- ⑪ (2) 1/2" NPT Knock-outs (CGB's/Conduit Fittings)
- ⑫ Door Stop
- ⑬ Stainless Steel Hinge
- ⑭ Closed Cell Neoprene Gasket

## BBA-6 Series Features:

### NEMA Ratings

- NEMA 3R (Standard), NEMA 4, NEMA 4X

### Available Material and Finish

- Mill nished aluminum (Standard)
- Powder coated aluminum (White)
- Stainless steel (304 or 316)

### Enclosure Dimensions

- Overall: (H) 40.125" x (W) 25.25" x (D) 17.125"
- Opening: (H) 31.625" x (W) 21.5"
- Inside: (H) 35.75" x (W) 23.75" x (D) 14.875"

### Back Panel Dimensions

- (H) 17" x (W) 21.75"

### Battery Capacity

- (6) BCI Group 27
- (6) BCI Group 30
- (6) BCI Group 31
- (2) BCI Group 8G4D
- (2) BCI Group 8G8D

### Weight

- 61 lbs



Sized to meet solar system requirements



Door fans available in 12V, 24V, and 48V DC/120V AC

### Additional Options:

- Breather/drain for NEMA4 - 4X (Required for all battery applications)
- Heat strips (120V, 150W with thermostat)
- Interior insulation (Low E)
- Sun shields (Available for top, sides, and door)

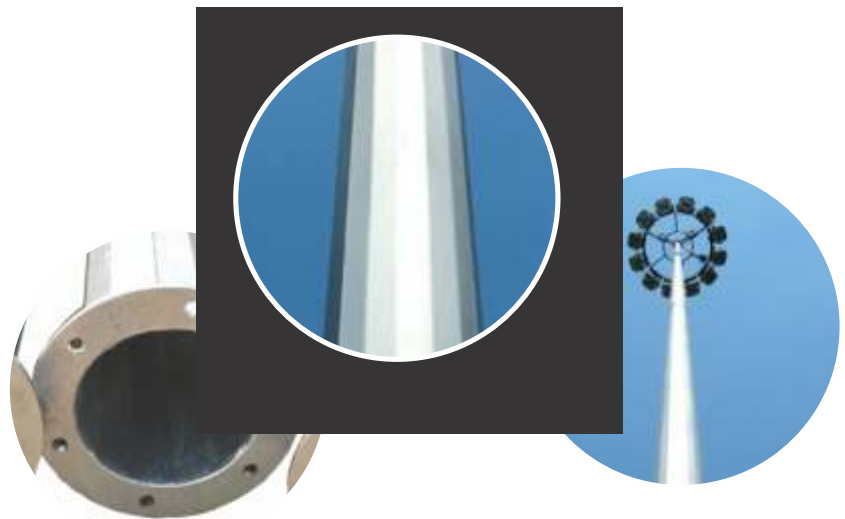
# HIGH MAST SUPPORT POLES

## Features

- High grade mild steel
- Strong base plate
- Hot dip galvanized
- Higher durability
- Corrosion free

## Advantages

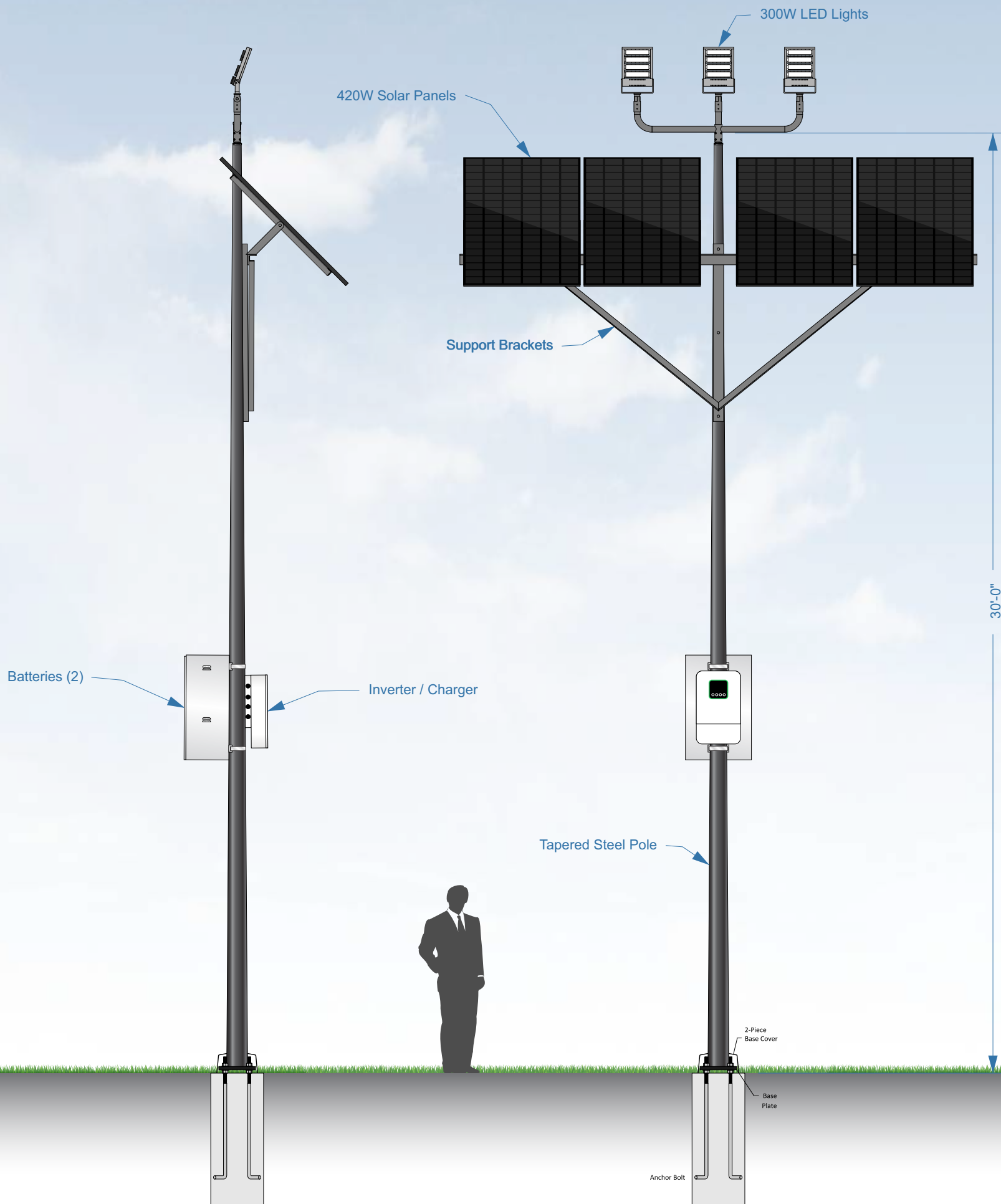
Fabricated from stainless steel and with the best in class technology, our High Mast poles promise to provide quality with zero defect generation assurance. Additionally, the pole material is corrosion-resistant and structurally durable.



Tech Detail	12 Mtr	12.5 Mtr	16 Mtr	20 Mtr	25 Mtr	30 Mtr	40 Mtr
Material Construction	BSEN10025 S355						
Thickness	3, 3 mm	3, 3 mm	3, 4 mm	3, 4 mm	3, 4, 4 mm	3, 4, 5 mm	4, 4, 5, 5, 6, 6 mm
Top & Bottom Dia	150/310 mm	150/360 mm	150/360 mm	150/410 mm	150/460 mm	150/500 mm	150/700 mm
Size of base plate	500 mm	540 mm	540 mm	610 mm	660 mm	700 mm	900 mm
Base plate thickness	16 mm	16 mm	20 mm	25 mm	25 mm	30 mm	40 mm
No. of foundation bolts	6 nos	6 nos	8 nos	8 nos	12 nos	12 nos	16 nos



# MODEL: LT30-900

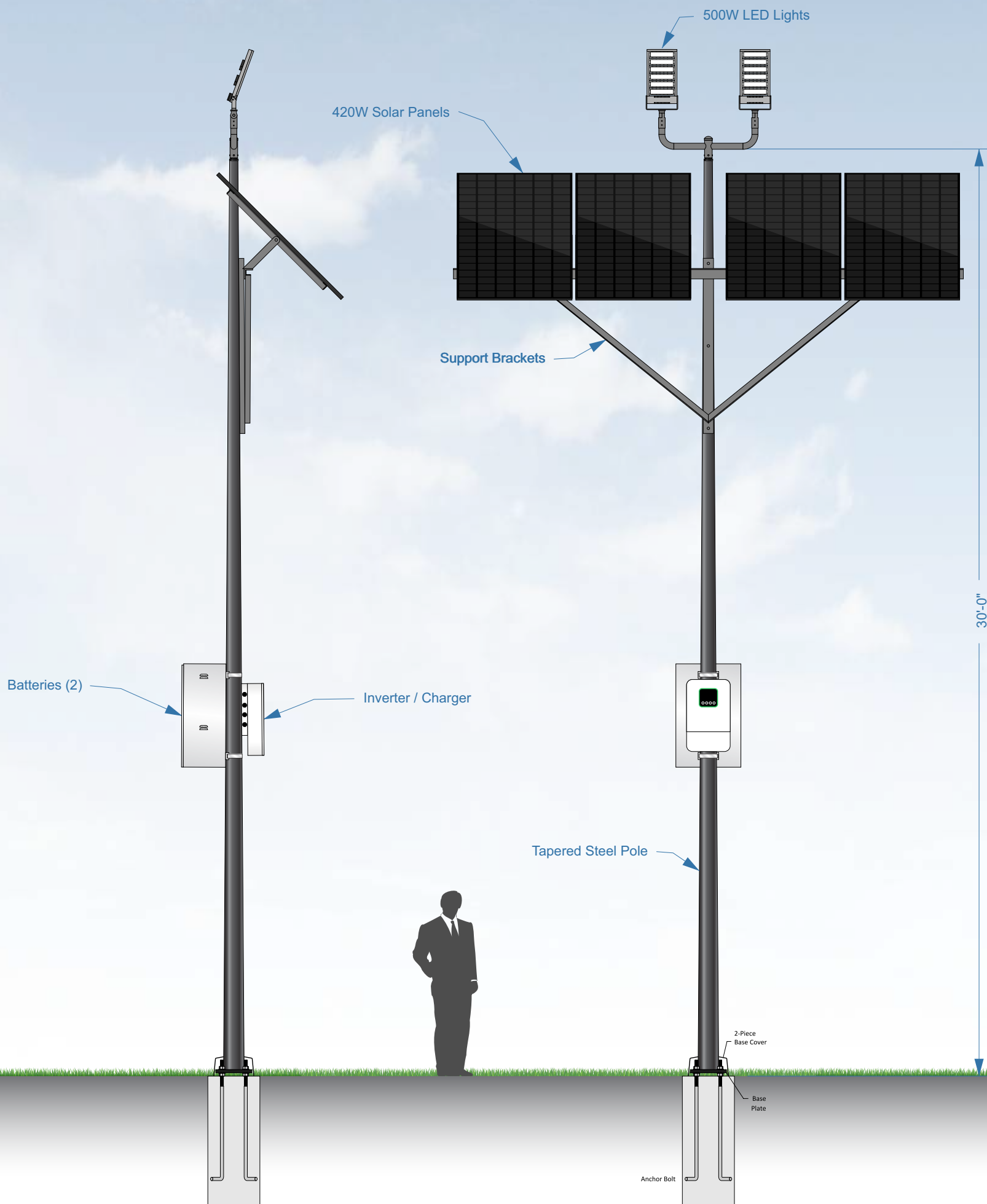


© Copyright 2023 Brightway LED Lighting

## 900W 30' SOLAR LIGHT TOWER

3x300W LED lights with 4x420W solar panels. 2x100AH / 25.6V batteries. Tapered steel pole with steel angle support brackets and bullhorn mounting arms for lights, steel angle braces for solar panels. Concrete footings (footing dimension determined by registered engineer). Lithium batteries mounted in weather tight enclosures. Discharge = 5.5 hours at 100% full power.

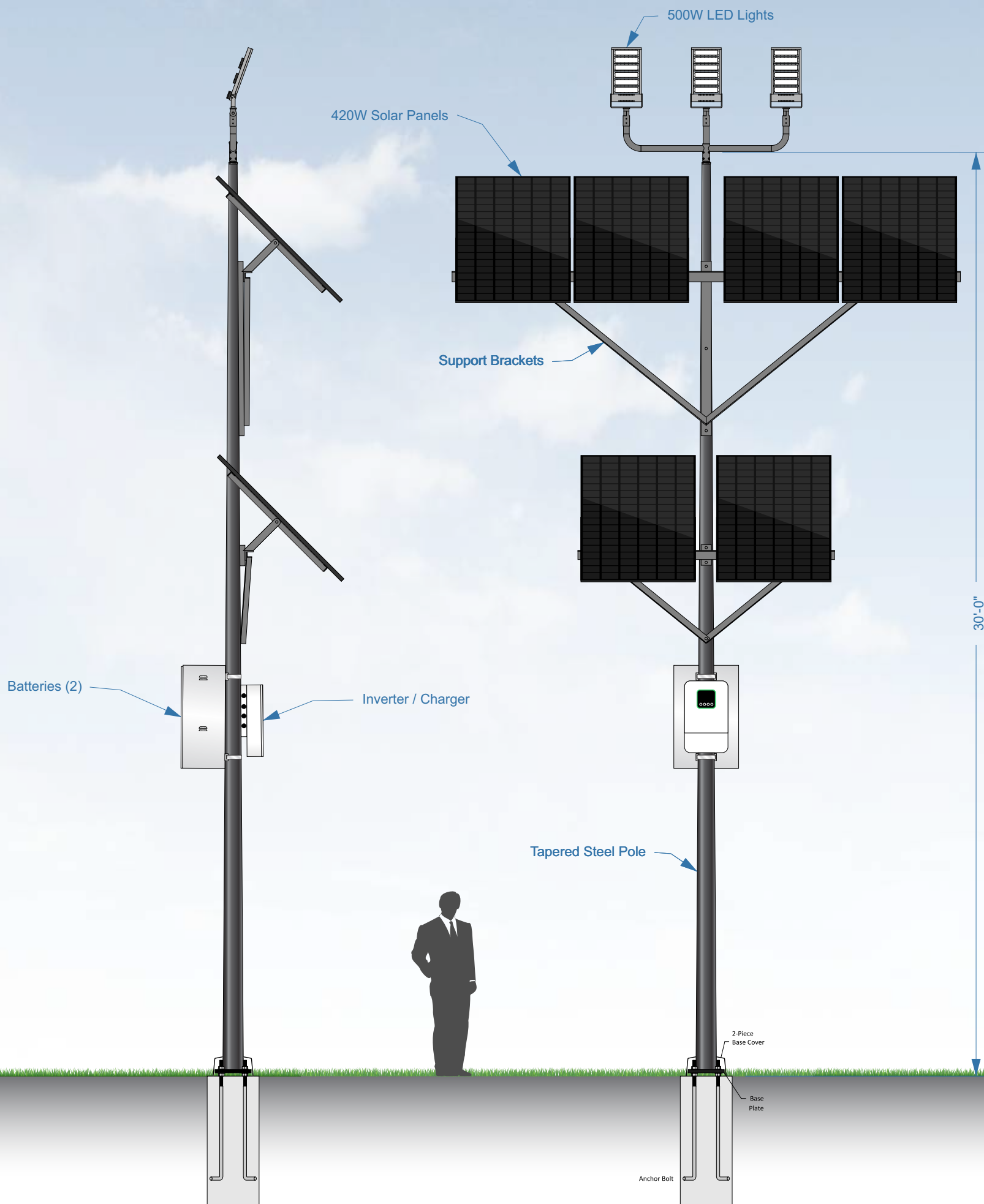
# MODEL: LT30-1000



## 1000W 30' SOLAR LIGHT TOWER

2x500W LED lights with 4x420W solar panels. 2x100AH / 25.6V batteries. Tapered steel pole with steel angle support brackets and bullhorn mounting arms for lights, steel angle braces for solar panels. Concrete footings (footing dimension determined by registered engineer). Lithium batteries mounted in weather tight enclosures. Discharge = 5.5 hours at 100% full power.

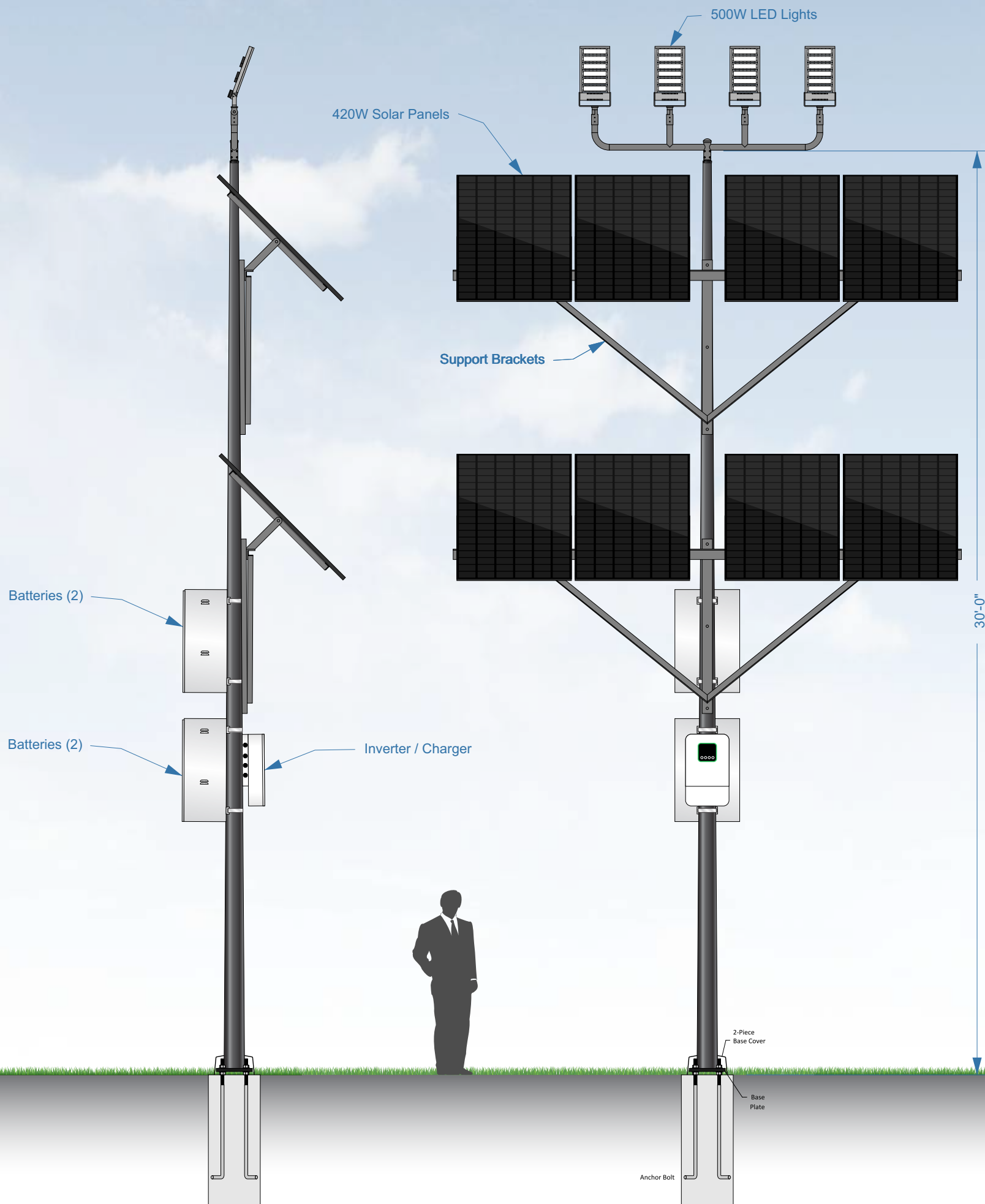
# MODEL: LT30-1500



## 1500W 30' SOLAR LIGHT TOWER

3x500W LED lights with 6x420W solar panels per light. 2x200AH / 25.6V batteries. Tapered steel pole with steel angle support brackets and bullhorn mounting arms for lights, steel angle braces for solar panels. Concrete footings (footing dimension determined by registered engineer). Lithium batteries mounted in weather tight enclosures. Discharge = 5.5 hours at 100% full power.

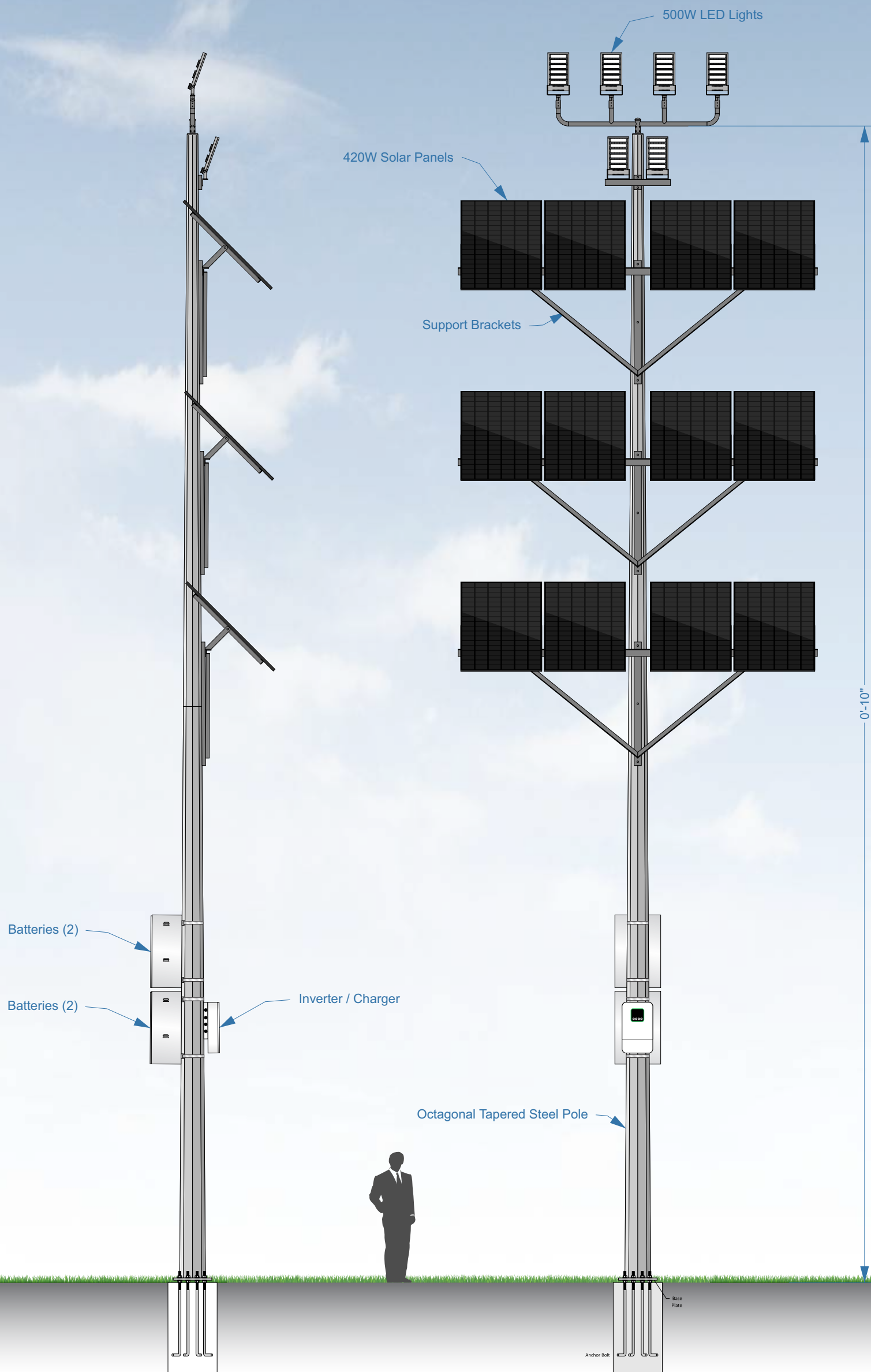
# MODEL: LT30-2000



## 2000W 30' SOLAR LIGHT TOWER

4x500W LED lights with 8x420W solar panels. 4x200AH / 25.6V batteries. Tapered steel pole with steel angle support brackets and bullhorn mounting arms for lights, steel angle braces for solar panels. Concrete footings (footing dimension determined by registered engineer). Lithium batteries mounted in weather tight enclosures. Discharge = 5.5 hours at 100% full power.

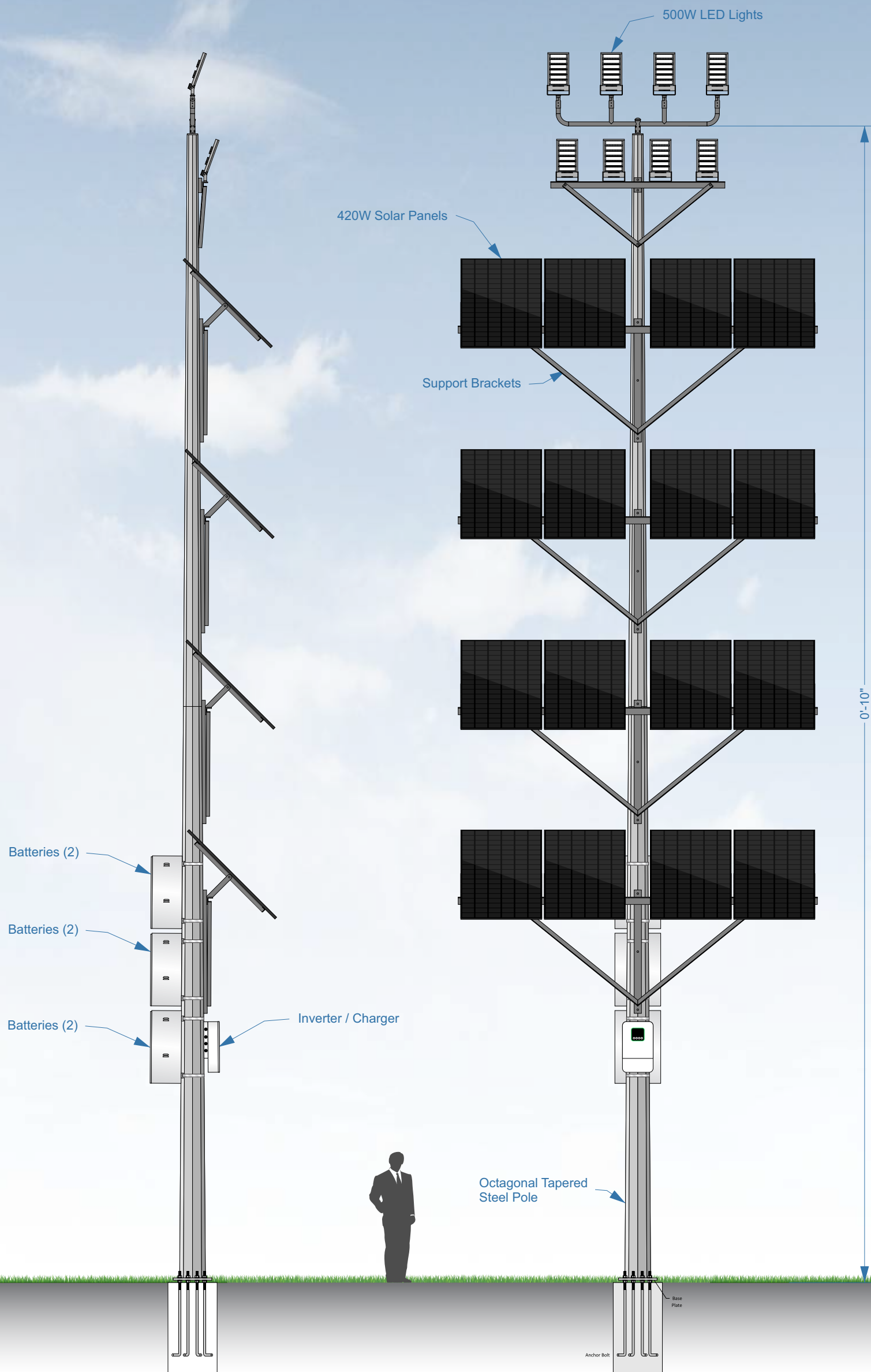
# MODEL: LT53-3000



## 3000W 53' SOLAR LIGHT TOWER

(6) 500W LED lights with 12x420W solar panels. 4x200AH / 25.6V batteries. Tapered steel pole with steel angle support brackets and bullhorn mounting arms for lights, steel angle braces for solar panels. Concrete footings (footing dimension determined by registered engineer). Lithium batteries mounted in weather tight enclosures. Discharge = 5.5 hours at 100% full power.

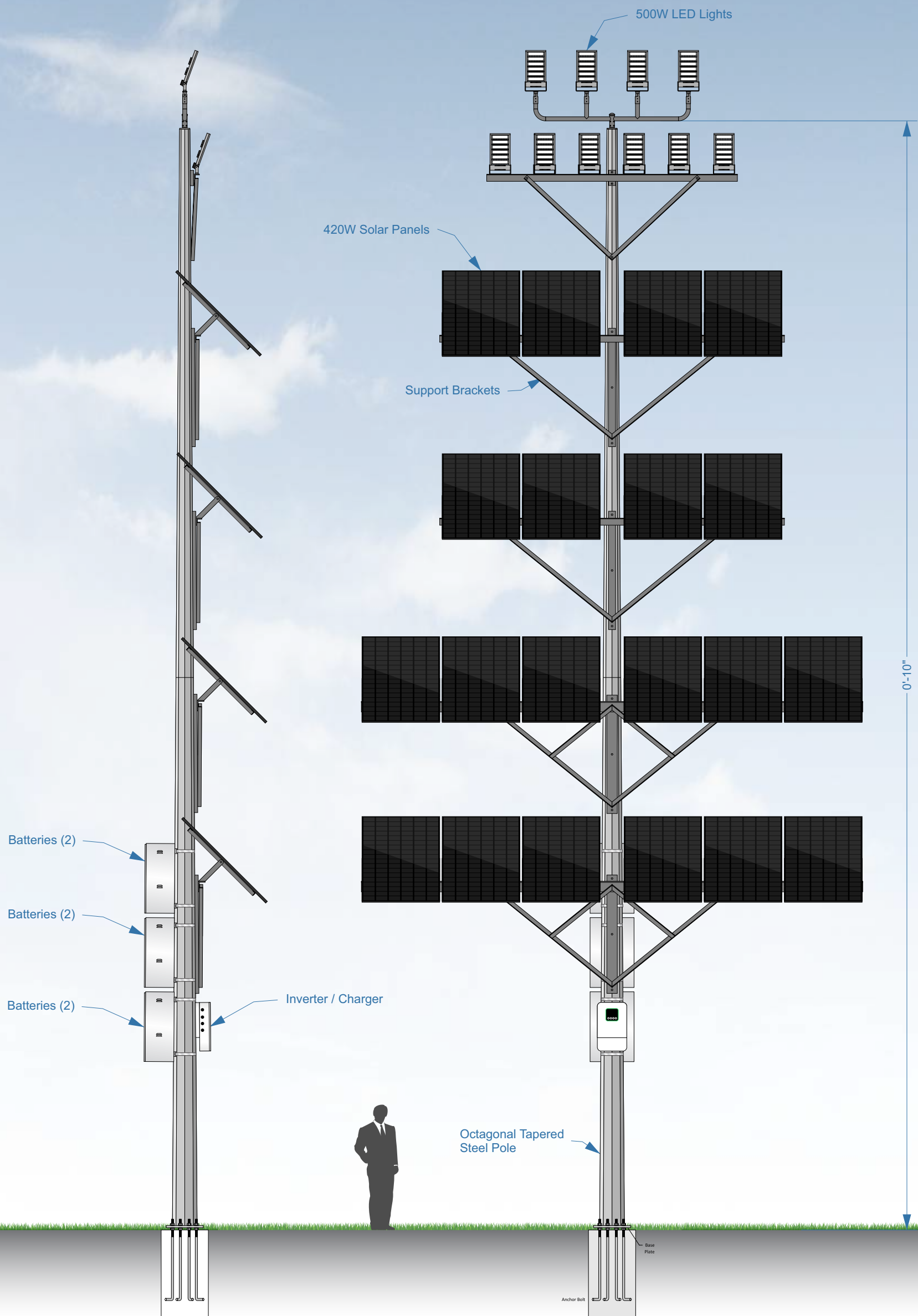
# MODEL: LT53-4000



## 4000W 53' SOLAR LIGHT TOWER

(8) 500W LED lights with 16x420W solar panels per light. 6x200AH / 25.6V batteries. Tapered steel pole with steel angle support brackets and bullhorn mounting arms for lights, steel angle braces for solar panels. Concrete footings (footing dimension determined by registered engineer). Lithium batteries mounted in weather tight enclosures. Discharge = 5.5 hours at 100% full power.

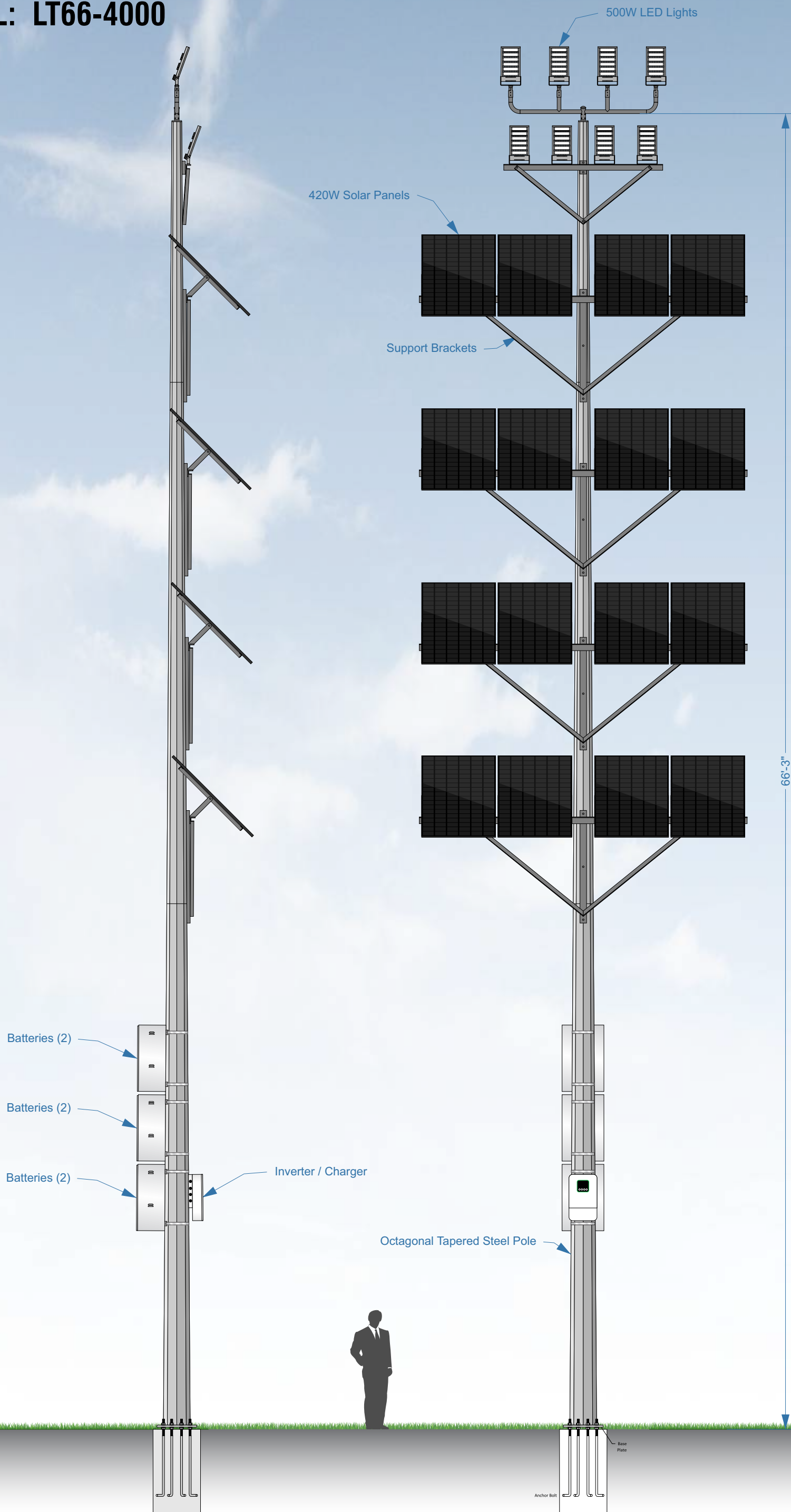
# MODEL: LT53-5000



## 5000W 53' SOLAR LIGHT TOWER

(10) 500W LED lights with 20x420W solar panels per light. 6x200 AH / 25.6V batteries. Tapered steel pole with steel angle support brackets and bullhorn mounting arms for lights, steel angle braces for solar panels. Concrete footings (footing dimension determined by registered engineer). Lithium batteries mounted in weather tight enclosures. Discharge = 5.5 hours at 100% full power.

# MODEL: LT66-4000

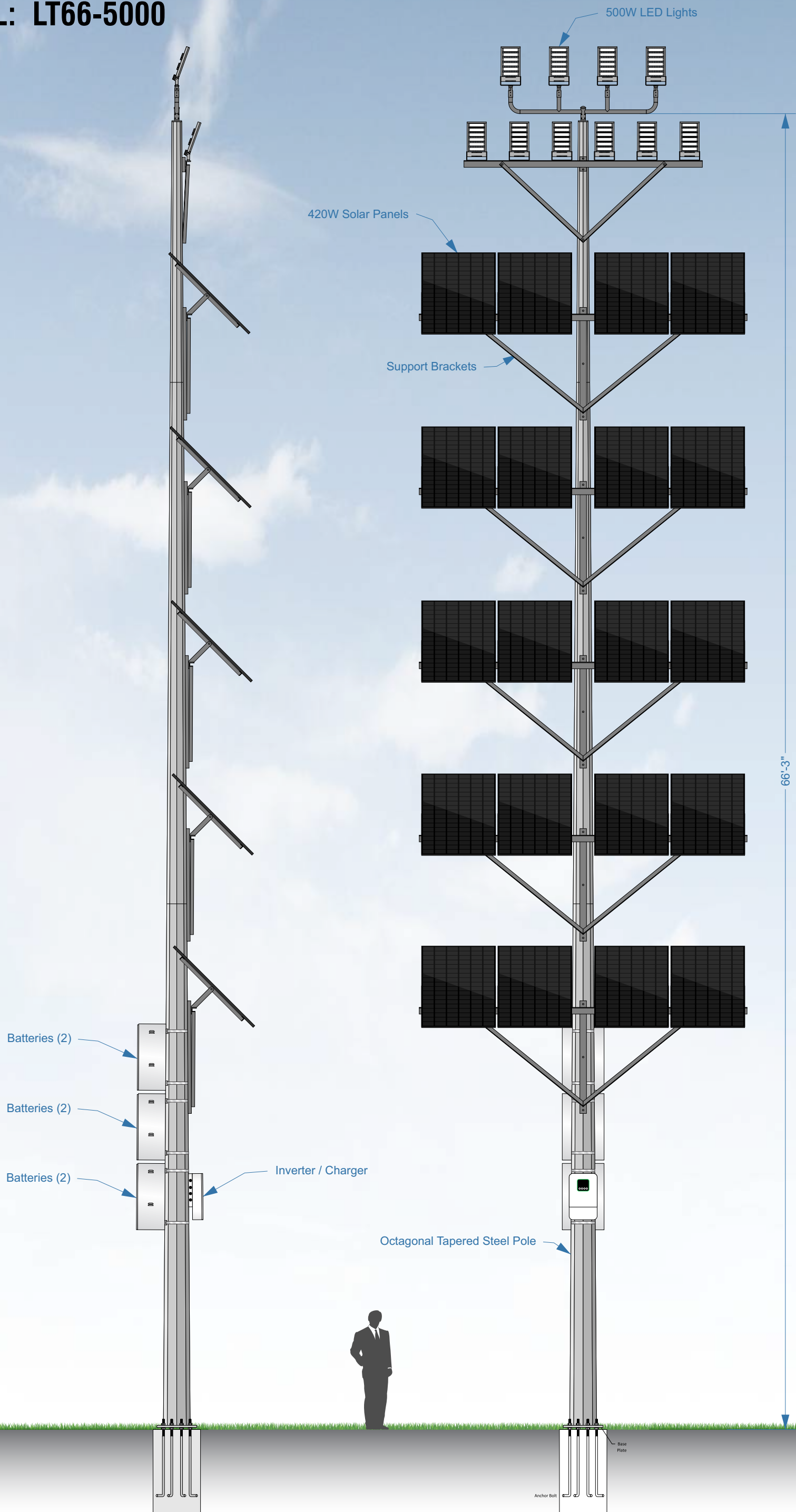


## 4000W 66' SOLAR LIGHT TOWER

(8) 500W LED lights with 16x420W solar panels. 6x200AH / 25.6V batteries. Tapered steel pole with steel angle support brackets and bullhorn mounting arms for lights, steel angle braces for solar panels. Concrete footings (footing dimension determined by registered engineer). Lithium batteries mounted in weather tight enclosures. Discharge = 5.5 hours at 100% full power.



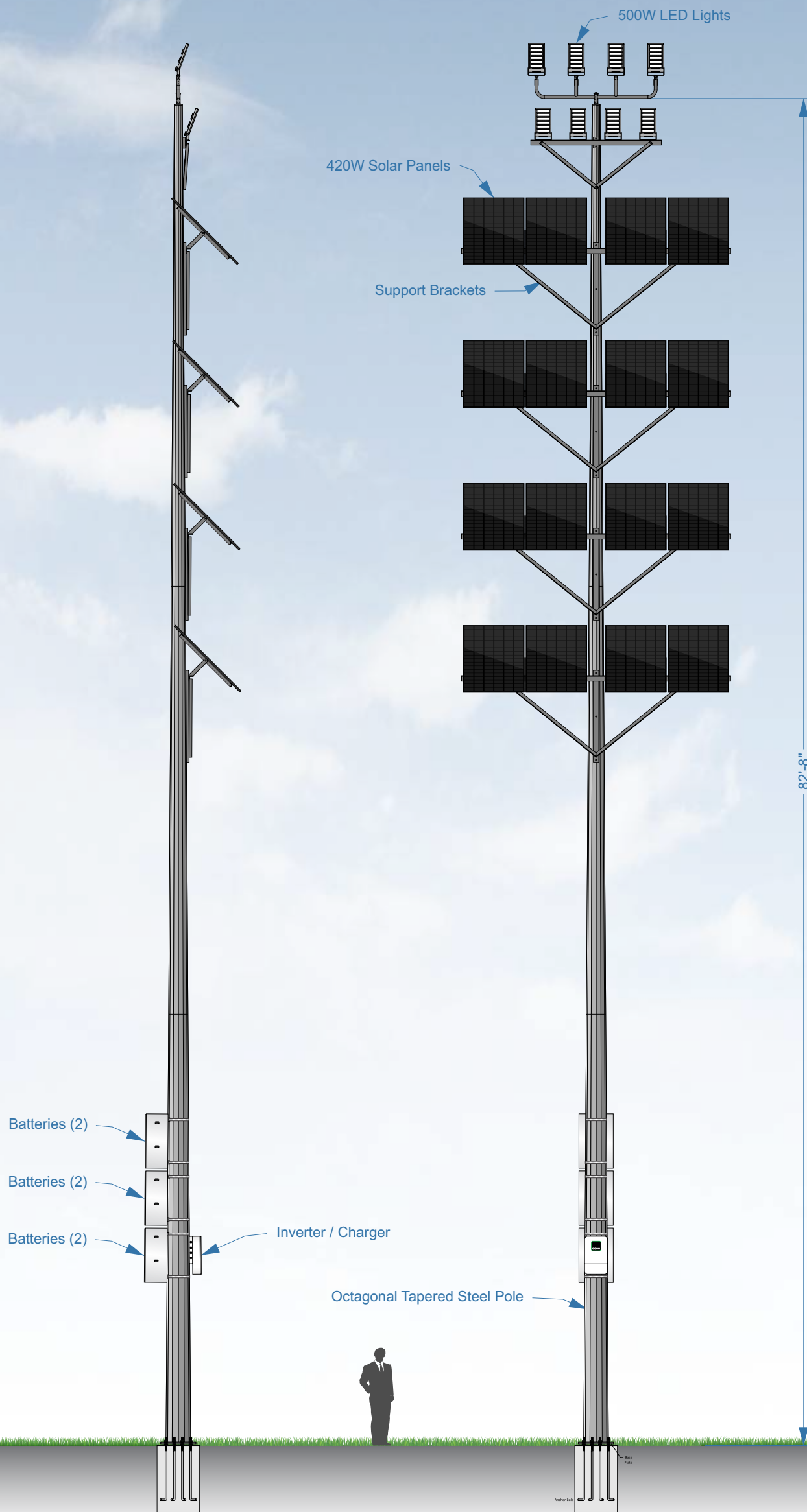
# MODEL: LT66-5000



## 5000W 66' SOLAR LIGHT TOWER

(10) 500W LED lights with 20x420W solar panels. 6x200AH / 25.6V batteries. Tapered steel pole with steel angle support brackets and bullhorn mounting arms for lights, steel angle braces for solar panels. Concrete footings (footing dimension determined by registered engineer). Lithium batteries mounted in weather tight enclosures. Discharge = 5.5 hours at 100% full power.

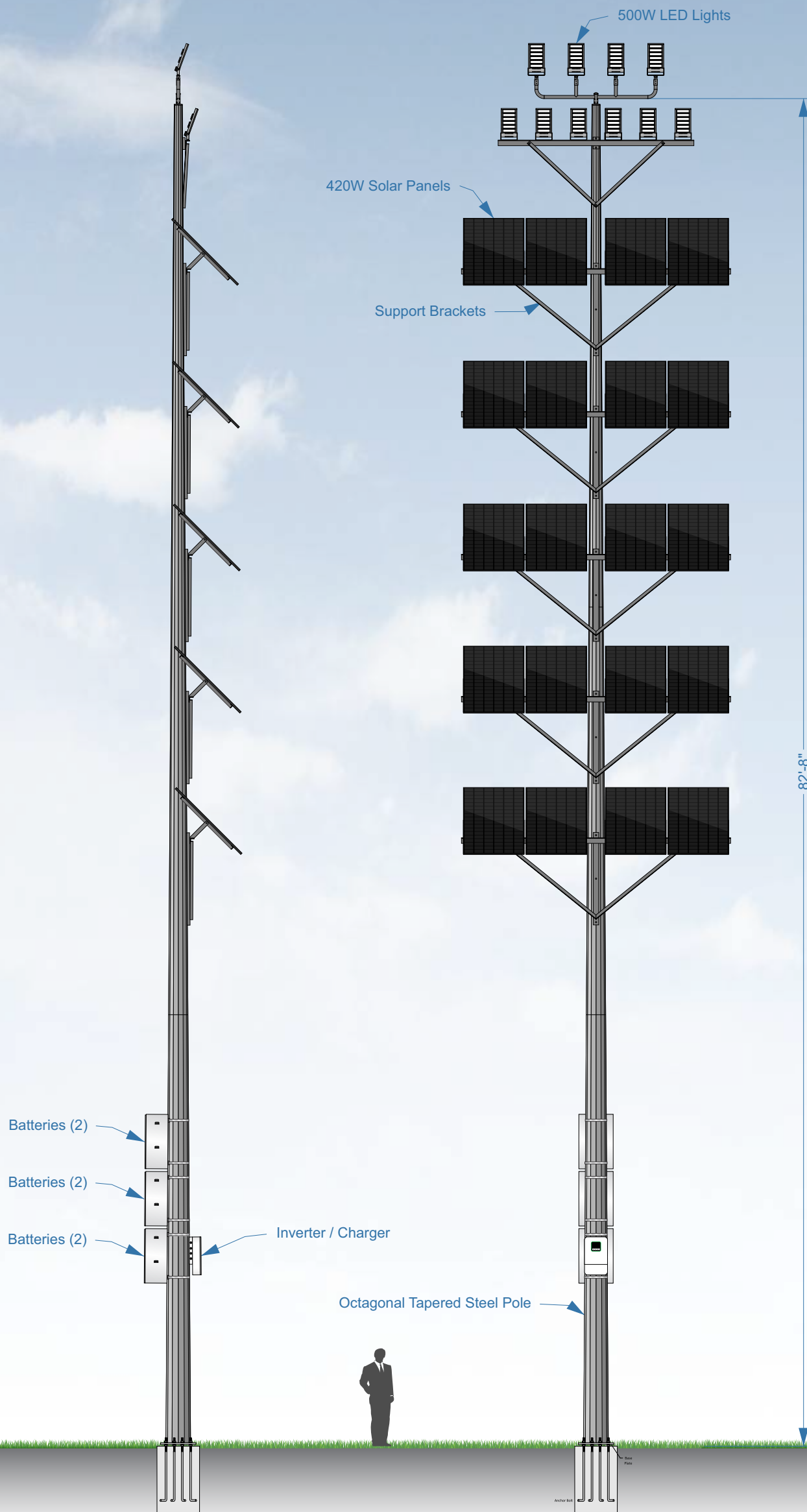
# MODEL: LT82-4000



## 4000W 82' SOLAR LIGHT TOWER

(8) 500W LED lights with 2x420W solar panels per light. 6x200AH / 25.6V batteries. Tapered steel pole with steel angle support brackets and bullhorn mounting arms for lights, steel angle braces for solar panels. Concrete footings (footing dimension determined by registered engineer). Lithium batteries mounted in weather tight enclosures. Discharge = 5 hours at 100% full power.

# MODEL: LT82-5000



## 5000W 82' SOLAR LIGHT TOWER

(10) 500W LED lights with 2x420W solar panels per light. 6x200AH / 25.6V batteries. Tapered steel pole with steel angle support brackets and bullhorn mounting arms for lights, steel angle braces for solar panels. Concrete footings (footing dimension determined by registered engineer). Lithium batteries mounted in weather tight enclosures. Discharge = 5 hours at 100% full power.



# **SolarBright**<sup>TM</sup>

**SOLAR POWERED LED LIGHT TOWERS**



**BRIGHTWAY** LED Lighting

[sales@brightwayledlighting.com](mailto:sales@brightwayledlighting.com) / [www.brightwayledlighting.com](http://www.brightwayledlighting.com)

**(314) 484-0339**

