

TP500 | Spider Post Top Light
35W / 50W / 100W / 150W / 200W / 300W



Specifications

Wattage	35W	50W	100W	150W	200W	300W
Installation height (Suggested)	10'-15'	15'-20'	25'-30'	30'-35'	35'-40'	40'-45'
LED Chips	SMD 3030, Philips or other LED chip					
Driver Brand	Meanwell / SOSEN, or other LED driver					
Material	Aluminum alloy+PC lens					
Color Temp	3000K / 4000K / 5000K / 6000K					
Lumen	4550LM / 6500LM / 13000LM / 19500LM / 26000LM / 39000LM					
AC Input Voltage	100-277V / 120-347V / 180-480V					
Light Distribution	Type V (120°) / Type V (150°) / Type III (90°*140°)					
Mounting Methods	Mount Tenon: 2 3/8" or 3" Round Tenon (Adapters available)					
Thermal Management	Superior thermal management with external Air-Flow fins					
Ambient Temperature	-40°C to +45°C(-40°F to +113°F)					
Total Harmonic Distortion (THD)	< 15%					
Housing	Bronze or Black Finish					
Lifetime	50,000H					
IP Rating	IP65					
Warranty	5 years					

Features



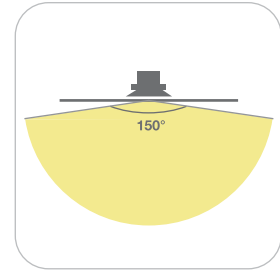
CCT Select



Power Select

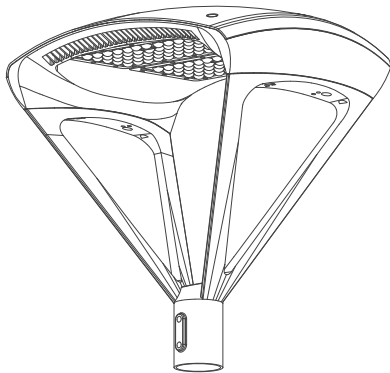


ADC12 Die casting

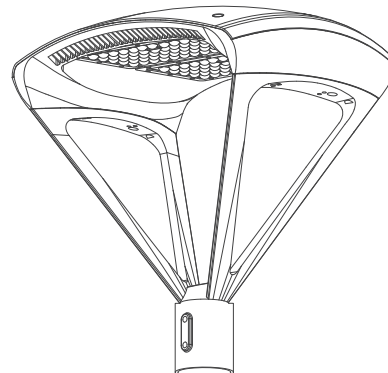


Beam angle 150°

Two Mount for optional

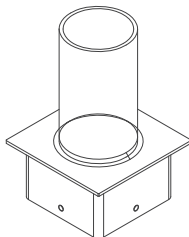


2 3/8" (60mm round pole)

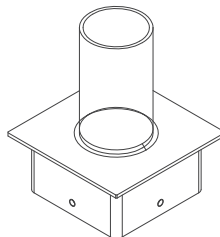


3" (76mm round pole)

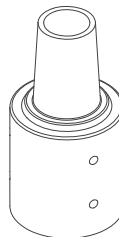
Adapters (suitable for 2 3/8" mount)



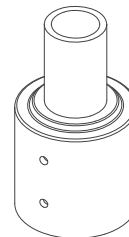
4" SQ



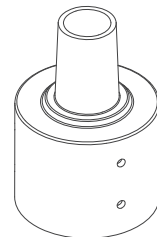
5" SQ



3" RD



4" RD



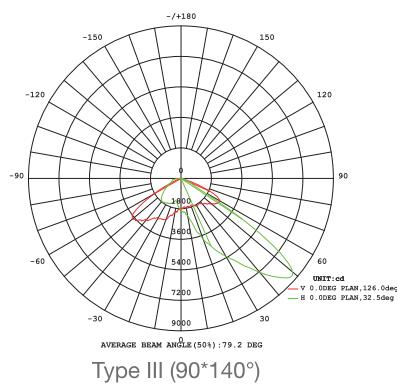
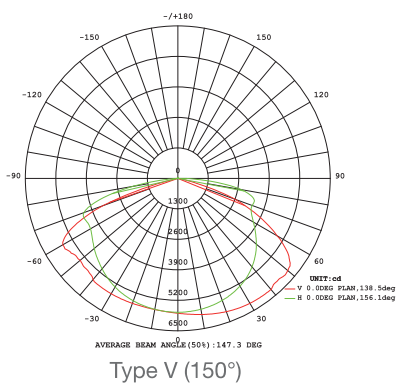
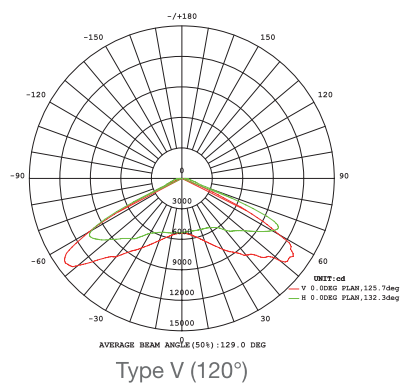
5" RD

LED SPIDER POST TOP LIGHT - YR Series TP500

CCT & Power Select



Light Distribution



Applications



Parking Lot



Square

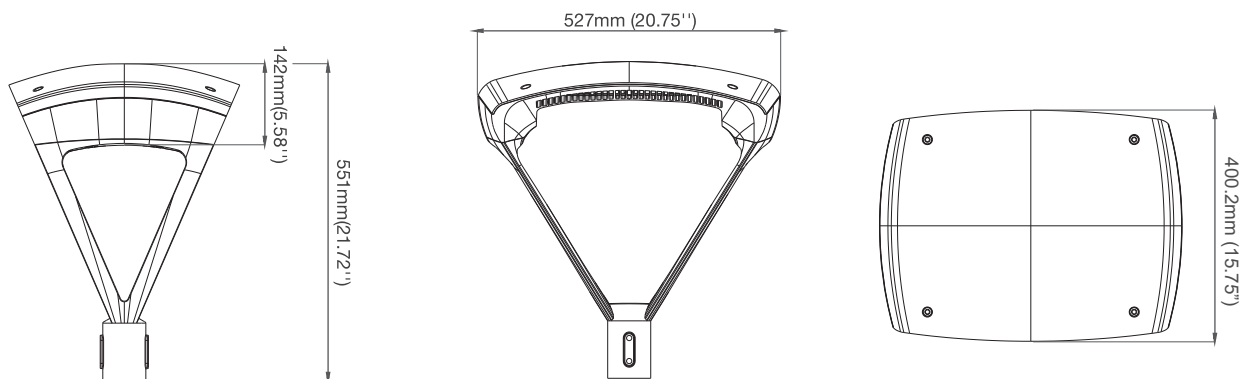


Library

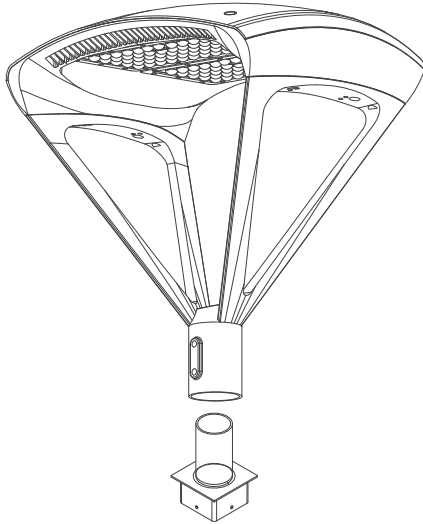


Roadway

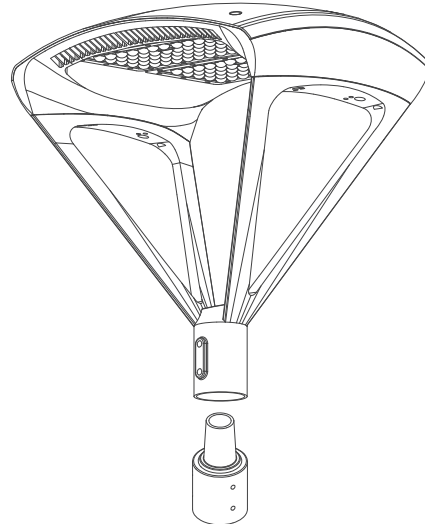
Dimension



Installation



Square pole



Round pole