



### LED Strip Light

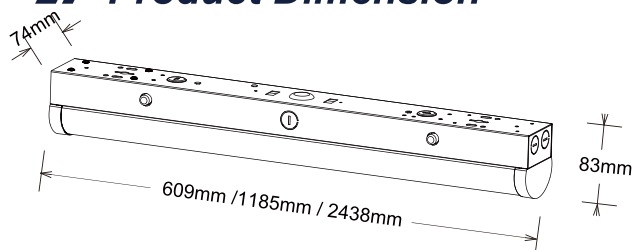
LED Strip Lighting with its slim design, this new linear strip light seamlessly blends flat high quality housing and precision optics to produce a sleek, subtle aesthetic that meets most office ceiling application needs, it is ideal for office spaces, supermarkets, and meeting rooms.



### Features & Benefits

1. 130lm/w for options.
2. Daisy connection with very convenient replacement in 1minute.
3. 0-10V Dimming, Universal voltage: 100-277v.
4. Available with suspending installation and surface-mounted installation.
5. Wide application for: school, hospital, super market, office and warehouse.
6. 2ft, 4ft and 8ft dimensions for variety choices.
7. 5-years warranty.

### Product Dimension



Model	L×W×H
SS-SP05-2FTXX	609x74x83(mm) / 23.98"x2.91"x3.27"
SS-SP05-4FTXX	1185x74x83(mm) / 46.65"x2.91"x3.27"
SS-SP05-8FTXX	2438x74x83(mm) / 95.98"x2.91"x3.27"

### Specification

Part No.	Power	Input Voltage	Luminous Flux	Luminous Efficacy	CCT	Viewing Angle	Ra	PF	Warranty
SS-SP05-2FT20W-H-XXK	20W	AC100-277V	2600LM	130lm/W	3500K 4000K 5000K 5700K 6500K	120°	>80	>0.9	5 Years
SS-SP05-4FT24W-H-XXK	24W		3120LM						
SS-SP05-4FT32W-H-XXK	32W		4160LM						
SS-SP05-4FT40W-H-XXK	40W		5200LM						
SS-SP05-8FT40W-H-XXK	40W		5200LM						
SS-SP05-8FT50W-H-XXK	50W		6500LM						
SS-SP05-8FT64W-H-XXK	64W		8320LM						
SS-SP05-4FT40/32/24W-H-TCP(XX)	40/32/24W		5200LM		3500K 4000K 5000K				
SS-SP05-4FT50/40/30W-H-TCP(XX)	50/40/30W		6500LM						
SS-SP05-8FT64/50/40W-H-TCP(XX)	64/50/40W		5200LM						
SS-SP05-8FT80/70/60W-H-TCP(XX)	80/70/60W		10400LM						

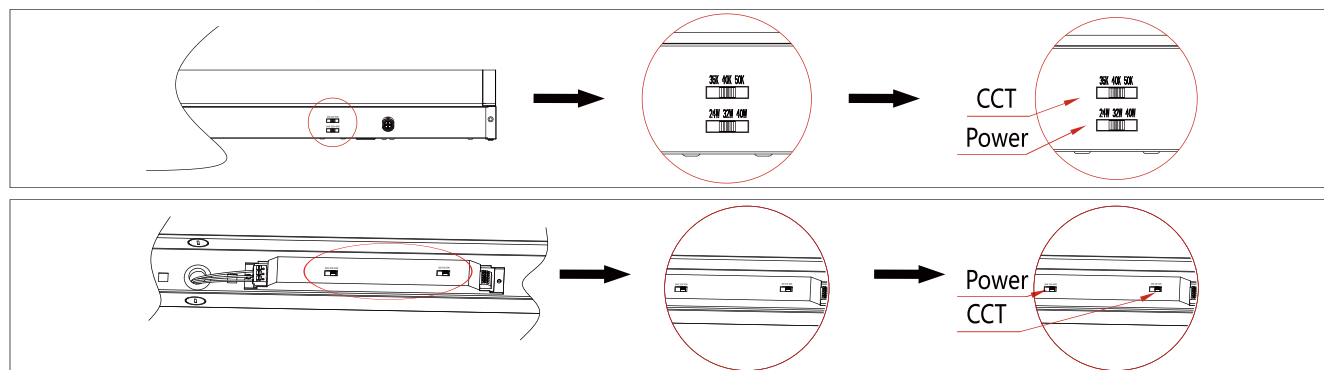
"Y" can be A, B, C, D or blank representing sensor type, A = PIR sensor, B = MS sensor, C = BRT sensor, D = PHB sensor, blank = no provide sensor.

## LED STRIP LIGHT - TS Series SP05

Part No.	Power	Input Voltage	Luminous Flux	Luminous Efficacy	CCT	Viewing Angle	Ra	PF	Warranty
SS-SP05-2FT20W-H-MV-XXK	20W	AC100-347V	2600LM	130lm/W	3500K 4000K 5000K 5700K 6500K	120°	>80	>0.9	5 Years
SS-SP05-4FT24W-H-MV-XXK	24W		3120LM						
SS-SP05-4FT32W-H-MV-XXK	32W		4160LM						
SS-SP05-4FT40W-H-MV-XXK	40W		5200LM						
SS-SP05-8FT40W-H-MV-XXK	40W		5200LM						
SS-SP05-8FT50W-H-MV-XXK	50W		6500LM						
SS-SP05-8FT64W-H-MV-XXK	64W		8320LM						
SS-SP05-4FT40/32/24W-H-MV-TCP(XX)	40/32/24W		5200LM		3500K 4000K 5000K				
SS-SP05-4FT50/40/30W-H-MV-TCP(XX)	50/40/30W		6500LM						
SS-SP05-8FT64/50/40W-H-MV-TCP(XX)	64/50/40W		5200LM						
SS-SP05-8FT80/70/60W-H-MV-TCP(XX)	80/70/60W		10400LM						

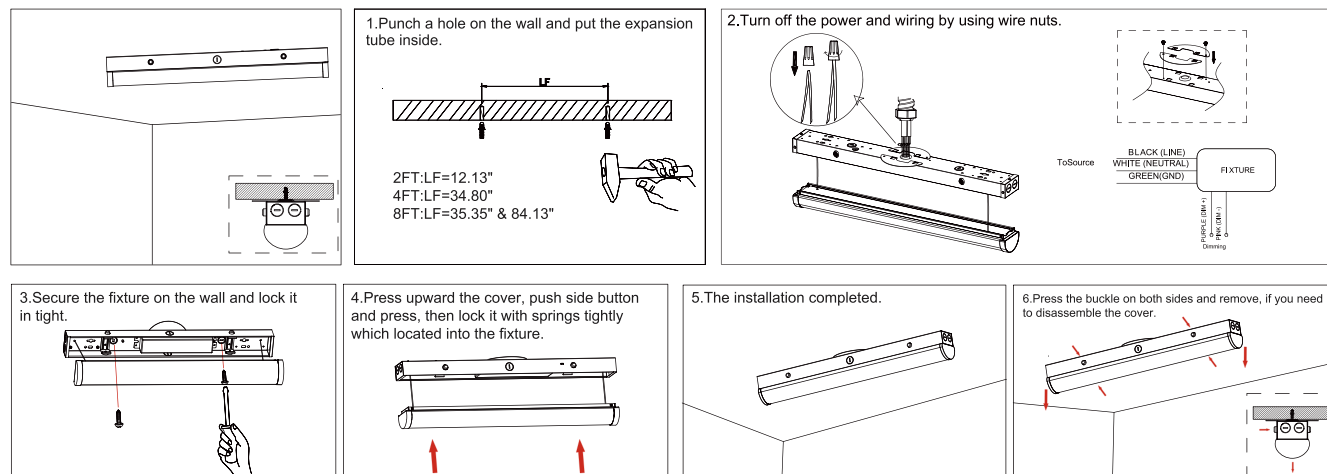
"Y" can be A, B, C, D or blank representing sensor type, A = PIR sensor, B = MS sensor, C = BRT sensor, D = PHB sensor, blank = no provide sensor.

## CCT&Wattage selectable



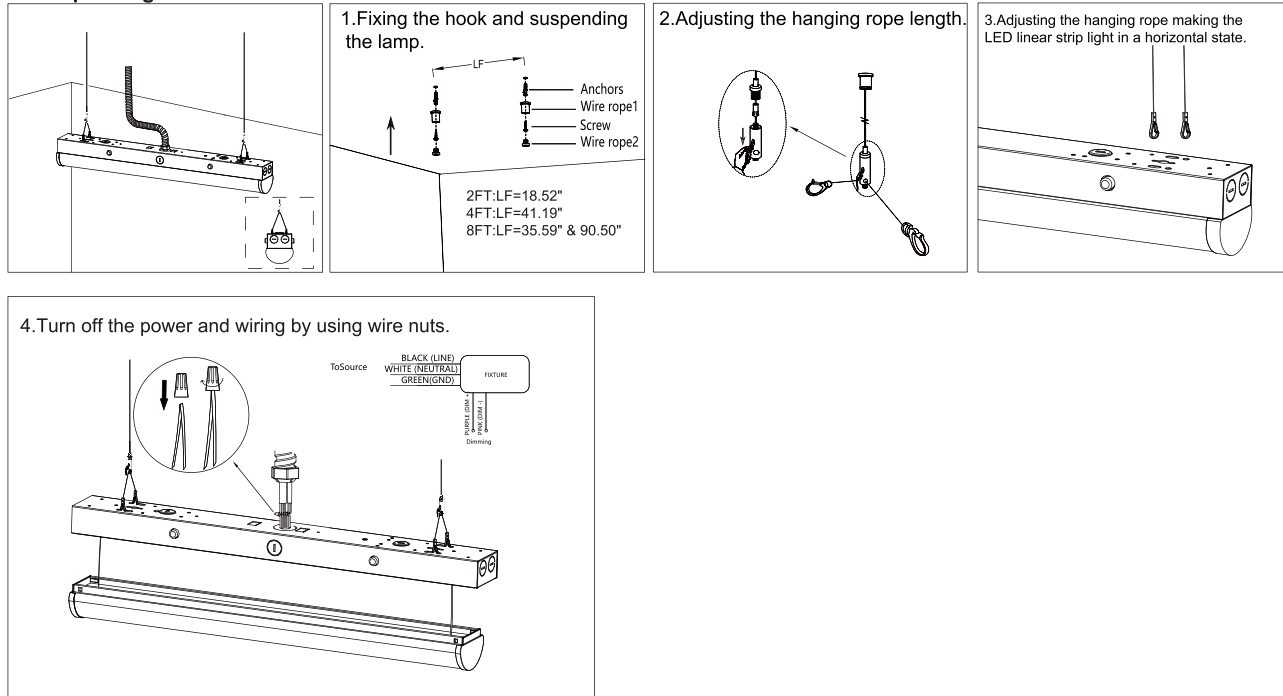
## Installation manual

### A. Surface-mounted installation

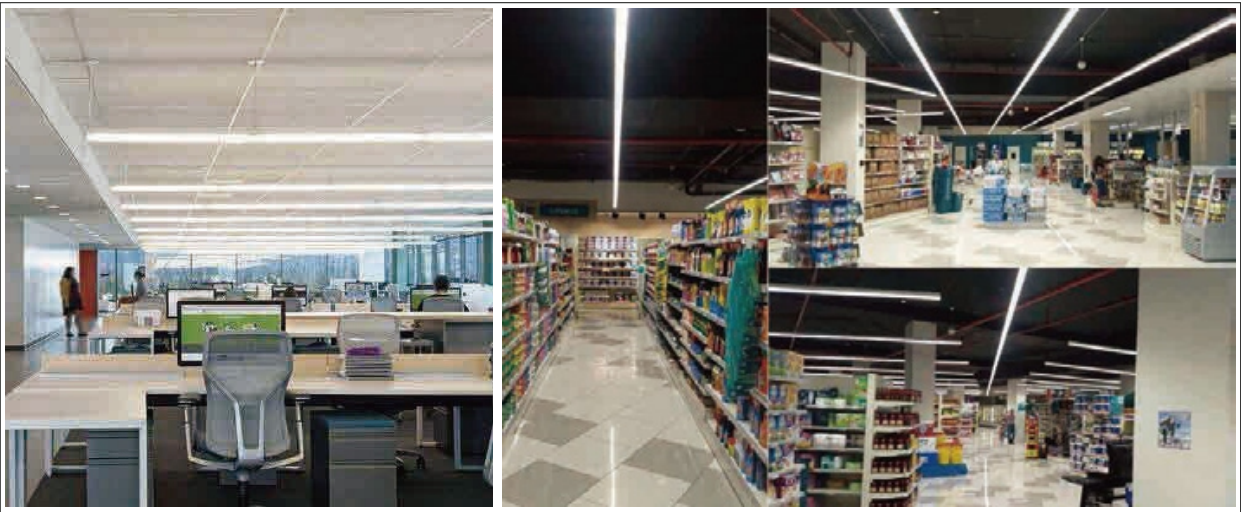


## LED STRIP LIGHT - TS Series SP05

### B. Suspending installation




### // Applications





## // Packing /weight

Size	Outer box (L*W*H)	Qty/Ctn (pcs)	N.W/pcs (lbs/Kg)	G.W/Ctn (lbs/Kg)
2ft	24.88"*9.33"*10.79" 632*237*274mm	9	18.96/8.6	20.28/9.2
4ft	47.56"*9.33"*10.79" 1208*237*274mm	9	28.22/12.8	31.31/14.2
8ft	96.85"*9.33"*7.52" 2460*237*191mm	6	37.15/16.8	41.78/18.95


## // Warning

 Risk of fire or electric shock. Fixture installation requires knowledge of luminaires electrical systems. If not qualified, DO NOT attempt installation. Contact a qualified electrician.

 Risk of fire or electric shock. Suitable for damp locations. Always turn off the power supply before installation.

 Risk of fire or electric shock. Suitable for non-insulated surface and frame. DO NOT cover fixture with insulation liner or similar material.

 DO NOT install fixture on unstable, loose or easily breakable surface.

 DO NOT exert force on the surface of the fixture.

## // Note

- 1.The installation and maintenance must be completed by electricians or professionals.
- 2.Please cut off the power before installation and maintenance.
- 3.The thermally insulating material is not allowed to cover the fixture.
- 4.Please keep away from the corrosive substance, and keep the fixture dry and clean.
- 5.Working temperature: -4°F~113°F, storage temperature: -22°F~140°F.