



LED WALL PACK LIGHT

Replacing metal halide fixtures with WK06 series LED wall pack increases energy efficiency and lowers maintenance costs. Rugged die-cast aluminum Heat dissipation, while durable PC lens is UV-stabilized to withstand conditions of outdoor industrial or commercial locations.



Product Features

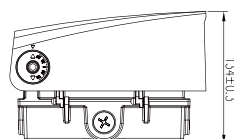
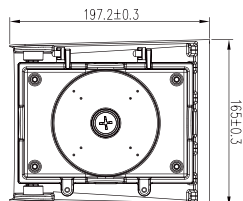
- A variety of drivers are available
Using an isolated, 0-10V dimmable.
- Protection level: Wet Location
The wall pack is sealed by silicone ring that can avoid dust completely and be waterproof, also the internal level ensures that the installation is horizontal.
- 0-10V dimming.



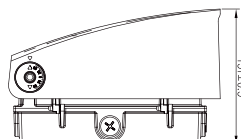
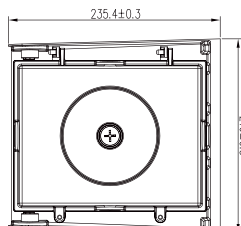
silicone ring

Product Dimension

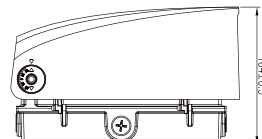
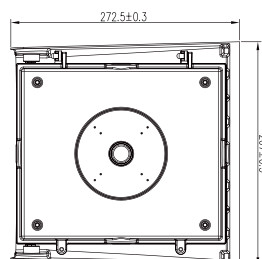
40W/30W/28W/20W



80W/60W/40W



120W/100W/80W



Specification

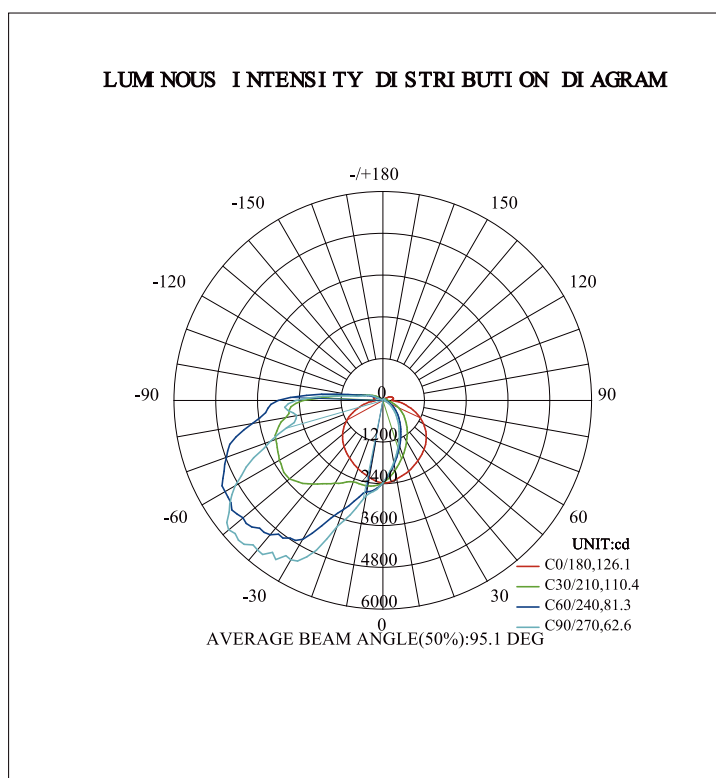
Power & CCT selectable												
Model Number	Wattage	Rate Current	Working Voltage	Beam Angle	CCT	Lighting Efficiency	Color Rendering Index	Operating Temperature	Storage Temperature	Environment Location	Life span	Lamp shell
SS-WK06-40/30/20W-H-TCP(XX)-Y	40/30/20W	0.256A	AC 120-277V / 120/347V	TYPE II	3000K 4000K 5000K	130LM/W	Ra>70	-40°F~113°F -40°C~45°C	-40°F~158°F -40°C~70°C	Wet Location	≥50000H	Brown
SS-WK06-80/60/40W-H-TCP(XX)-Y	80/60/40W	0.366A										
SS-WK06-120/100/80W-H-TCP(XX)-Y	120/100/80W	0.55A										

Where H, can be H or L represent different light effects (Not affect the power), "XX" can be "30K", "40K", "50K". "Y" can be A, B, C, D or blank representing sensor type, A = PIR sensor, B = MS sensor, C = BRT sensor, D = PHB sensor, blank = no provide sensor.

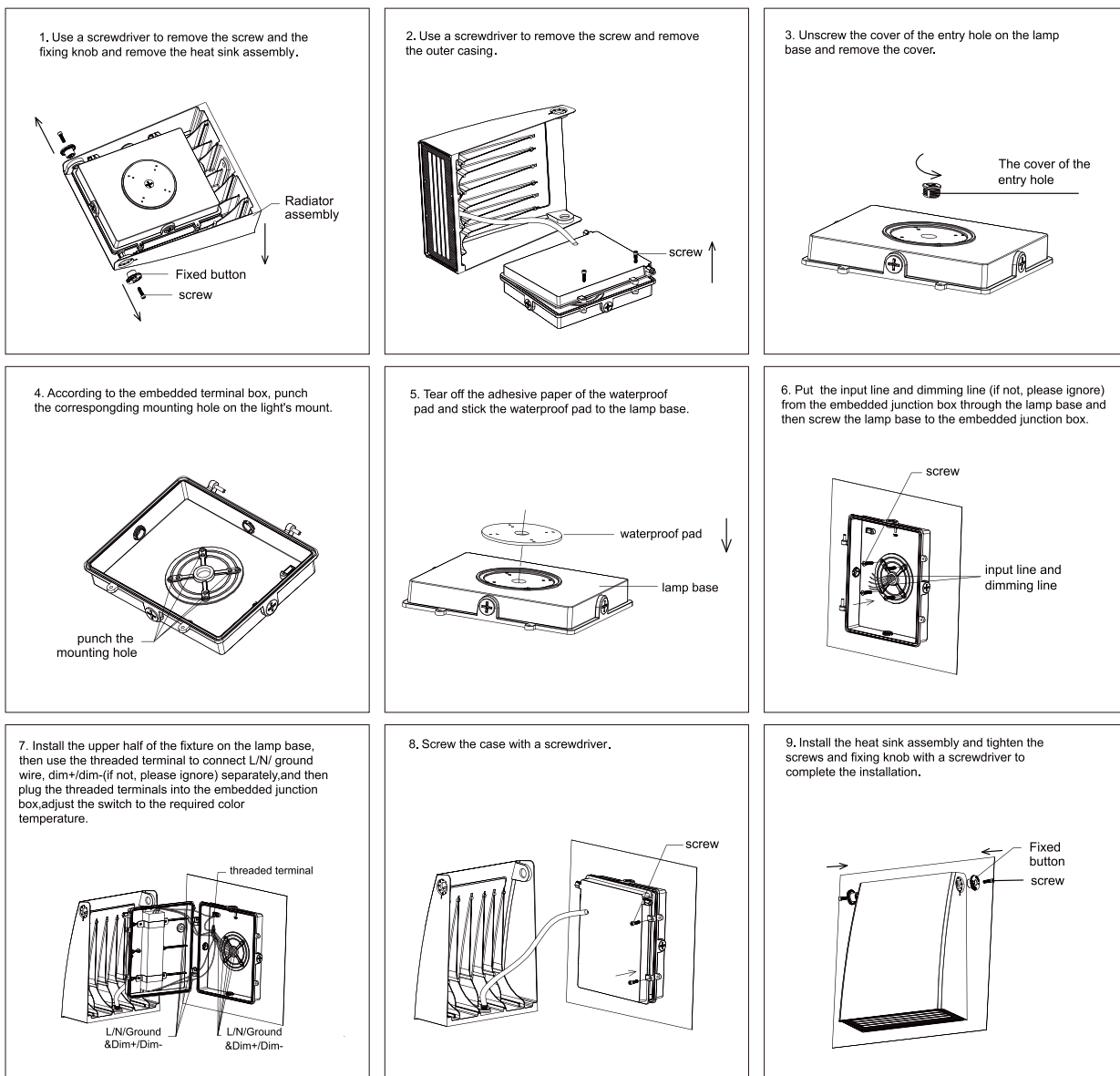
Product Accessories



Optical Properties



Installation Instruction



Packing/Weight

Model	Inner box (L*W*H)	Outer box (L*W*H)	Qty/Ctn (pcs)	N.W/pcs (lbs/Kg)	G.W/pcs (lbs/Kg)	Remarks
40W/30W/28W/20W	232*200*169mm 9.13**7.87**6.65"	420*252*358mm 16.54**9.92**14.09"	4	15.18	16.68	0.15M cable
80W/60W/40W	270*251*186mm 10.63**9.88**7.32"	522*290*392mm 20.55**11.42**15.43"		20.72	23.92	
120W/100W/80W	307*302*199mm 12.09**11.89**7.83"	624*327*418mm 24.57**12.87**16.46"		28.60	32.28	

// Applications



// Note

1. Using the standard working voltage: AC120~277V & AC120~347V, 50/60Hz, do not exceed.
2. Be sure the power supply is turned off before installation.
3. Switch off power of the mains supply or the connection lead respectively before doing any works.
4. Please note waterproof, dustproof, electricity prevention and shockproof for the external power wires.
5. Directly fix bolts on the installation stem through the hole on the mounting bracket.
6. Be sure the connection between the wires is in good condition when install the lamps, beware of leakage.
7. Please read the specification carefully before installation.
8. The complete installation must be handled by an electrical expert.