

# J-AR08®



## FEATURES AND SPECIFICATIONS

### Construction

- Die-cast Aluminum housing with powder coat finish.
- UV Stabilized polycarbonate lens.
- Easy to install and operate

### Electrical

- Lumileds Chips, 140lm/w.
- Sosen Led Driver , AC120-277V,0-10V dimming
- Surge Protection: 10KV
- CCT & Wattage Selectable
- Light Distribution: Type III
- Waterproof : IP65 rated

### Applications

- Parking Lots, Factories, Playgrounds, Retail Centers, Walkways, Warehouses

### Installation

- Slip-fitter/Trunnion/Yoke/Adjustable Arm Mount/Arm Mount

### Warranty

- 5 years warranty

Specs at a Glance		* Nominal Wattage (Switchable)
Configuration	J-AR08-150WBT3DA2	J-AR08-300WBT3DA2
CCT (K)	3000K 4000K 5000K Tunable	
Wattage (W)*	100W/120W/150W wattage adjustable	200W/240W/300W wattage adjustable
Lumens (lm)	max.21000lm	max.42000lm
Efficacy (LPW)	Up to 140lm/w	
CRI	>80	
Input Voltage	120-277V	
Operating Temp	-40°C-50°C	
Certification	UL DLC Premium	
Warranty	5 year limited warranty	

## LED AREA LIGHT - JN Series J-AR08

### Ordering information

Example: J-AR08-300WBT3DA2-abcdefg [q]

Brand	Wattage xxxW	Manufacturer of LED	Lighting Distribution	CCT&Wattage Selectable
JEN Lighting AR08 Series	200W 240W 300W	B= Lumileds SMD2835	T3=Type III	"f" can be any alphanumeric for CCT, 3000K/4000K/5000K  "g" can be "W" or blank for dimming module provided not.

### Detail

Light Distribution:  
Type III

Lumileds Chips  
Sosen LED Driver



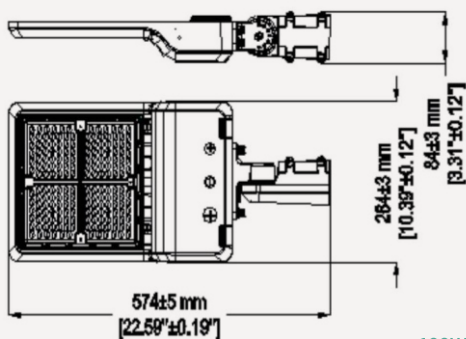
Wattage and CCT  
selectable switches

Photocell Option

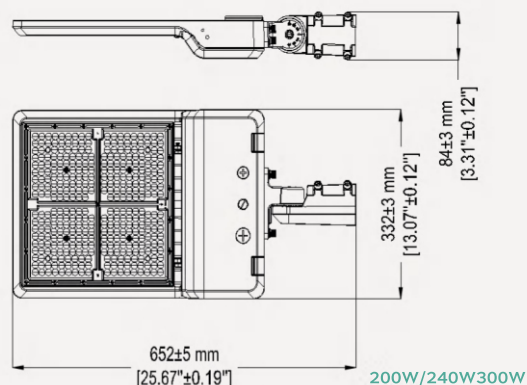


Tool Free

### Dimensions



100W/120W/150W



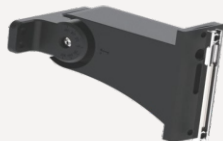
200W/240W/300W

## LED AREA LIGHT - JN Series J-AR08

### Accessories



**Type A**  
Slip-fitter



**Type B**  
Adjustable arm mount  
(Square/Round pole)

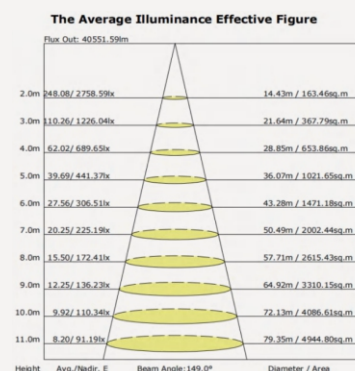
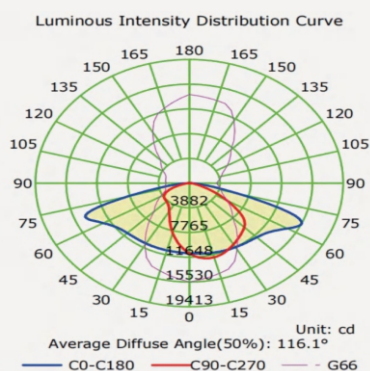


**Type D**  
Trunnion



Photocell sensor

### PHOTOMETRICS



### Packing/Weight

Part NO.	Outer Carton Size	Qty/Carton(pcs)	Net weight(lbs)	Gross weight(lbs)
J-AR08-150WBT3DA2	21.6x12.6x5.9 inches	1	10.3 lbs	11.3 lbs
J-AR08-300WBT3DA2	24.8x14.96x5.91 inches	1	12.5 lbs	13.6 lb